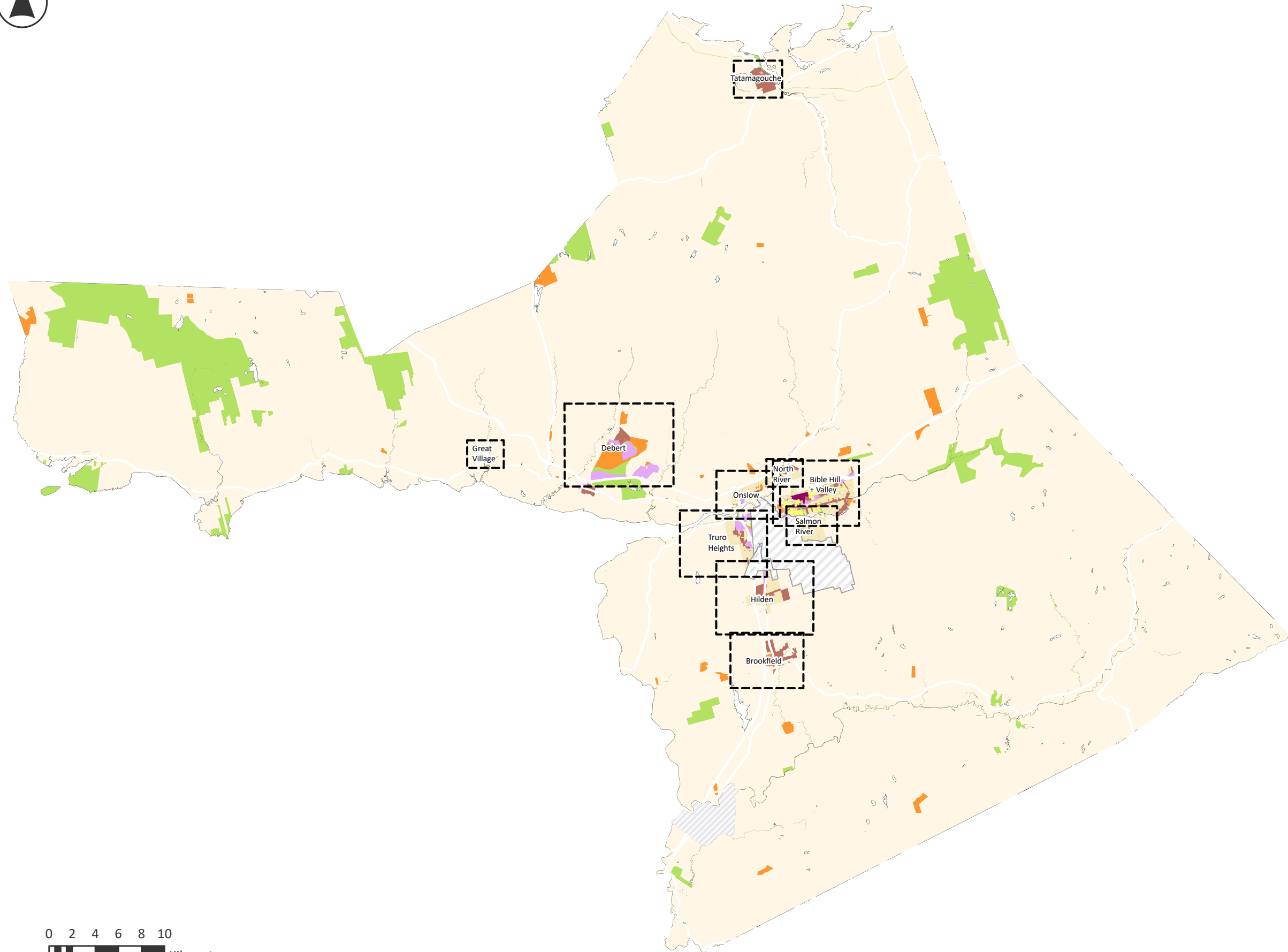





FUTURE LAND USE MAP

SCHEDULE B



- I Institutional
- C Commercial
- CDD Comprehensive Development District
- M Industrial
- POS Parks and Open Spaces
- R Rural
- RLD Low Density Residential
- RMHD Medium-High Density Residential
- Inset Map Extent
- Town of Truro
- Millbrook First Nations
- Town of Stewiacke

0 2 4 6 8 10
 Kilometers
 Scale: 1:350,000
 When Printed at 17" x 11"

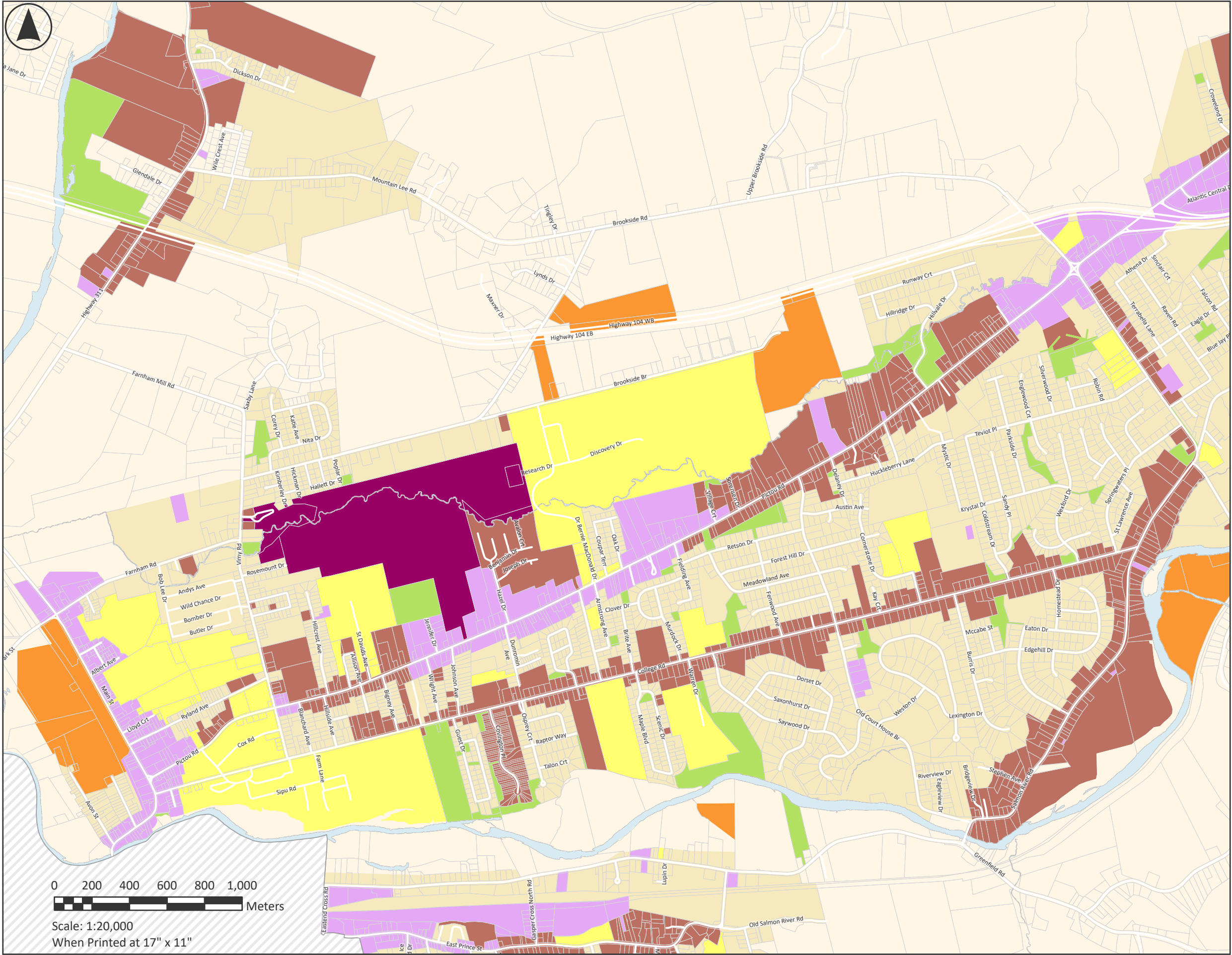


Notes

Property information provided by
 Land Information Services of Service Nova Scotia
 and Municipal Relations

Maps Originally Generated with ArcGIS
 June 5, 2025

Current Version updated 2025



BIBLE HILL + VALLEY FUTURE LAND USE MAP SCHEDULE B

- I Institutional
- C Commercial
- CDD Comprehensive Development District
- M Industrial
- POS Parks and Open Spaces
- R Rural
- RLD Low Density Residential
- RMHD Medium-High Density Residential
- Water Bodies



Notes

Property information provided by
Land Information Services of Service Nova Scotia
and Municipal Relations

Maps Originally Generated with ArcGIS
June 5, 2025

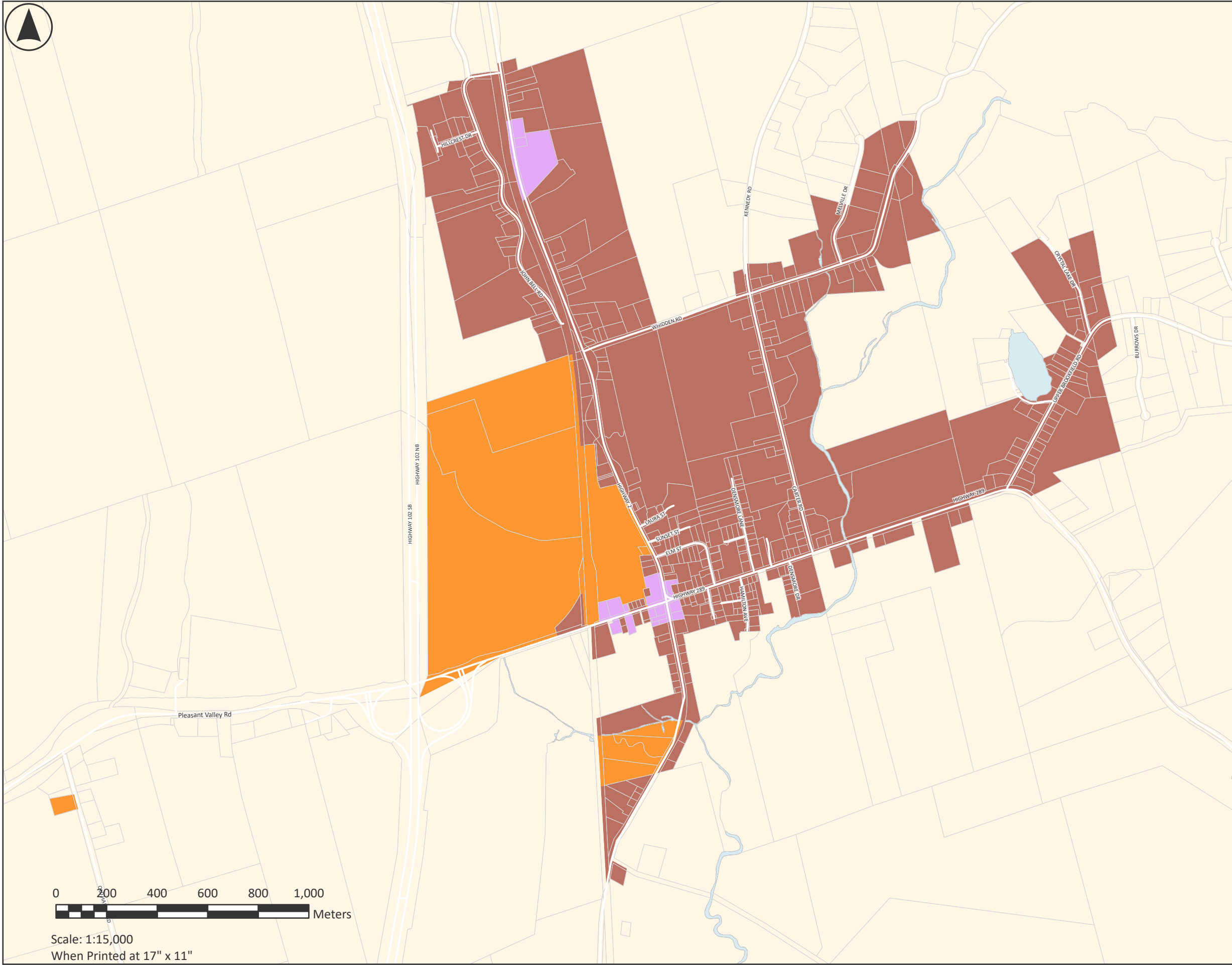
Current Version updated 2025

0 200 400 600 800 1,000
Meters
Scale: 1:20,000
When Printed at 17" x 11"



BROOKFIELD FUTURE LAND USE MAP SCHEDULE B

- I Institutional
- C Commercial
- CDD Comprehensive Development District
- M Industrial
- POS Parks and Open Spaces
- R Rural
- RLD Low Density Residential
- RMHD Medium-High Density Residential
- Water Bodies



Scale: 1:15,000
When Printed at 17" x 11"

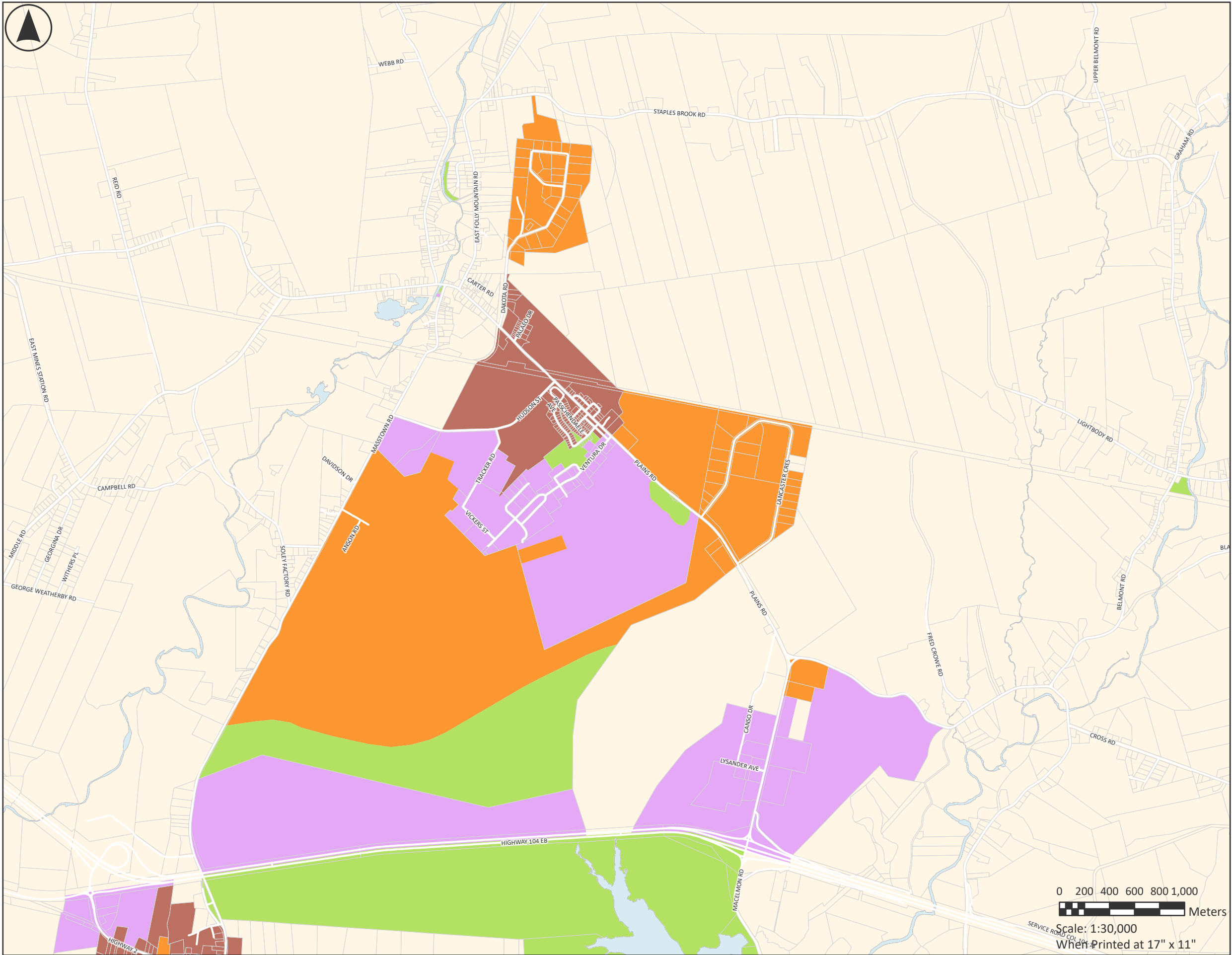


Notes

Property information provided by
Land Information Services of Service Nova Scotia
and Municipal Relations

Maps Originally Generated with ArcGIS
June 5, 2025

Current Version updated 2025



DEBERT FUTURE LAND USE MAP SCHEDULE B

- I Institutional
- C Commercial
- CDD Comprehensive Development District
- M Industrial
- POS Parks and Open Spaces
- R Rural
- RLD Low Density Residential
- RMHD Medium-High Density Residential
- Water Bodies

0 200 400 600 800 1,000
Meters
Scale: 1:30,000
When Printed at 17" x 11"



Notes


Property information provided by
Land Information Services of Service Nova Scotia
and Municipal Relations
Maps Originally Generated with ArcGIS
June 5, 2025
Current Version updated 2025



GREAT VILLAGE FUTURE LAND USE MAP SCHEDULE B

- I Institutional
- C Commercial
- CDD Comprehensive Development District
- M Industrial
- POS Parks and Open Spaces
- R Rural
- RLD Low Density Residential
- RMHD Medium-High Density Residential
- Water Bodies



0 20 40 60 80 100
 Meters
 Scale: 1:4,000
 When Printed at 17" x 11"



Notes

Property information provided by
 Land Information Services of Service Nova Scotia
 and Municipal Relations

Maps Originally Generated with ArcGIS
 June 5, 2025

Current Version updated 2025

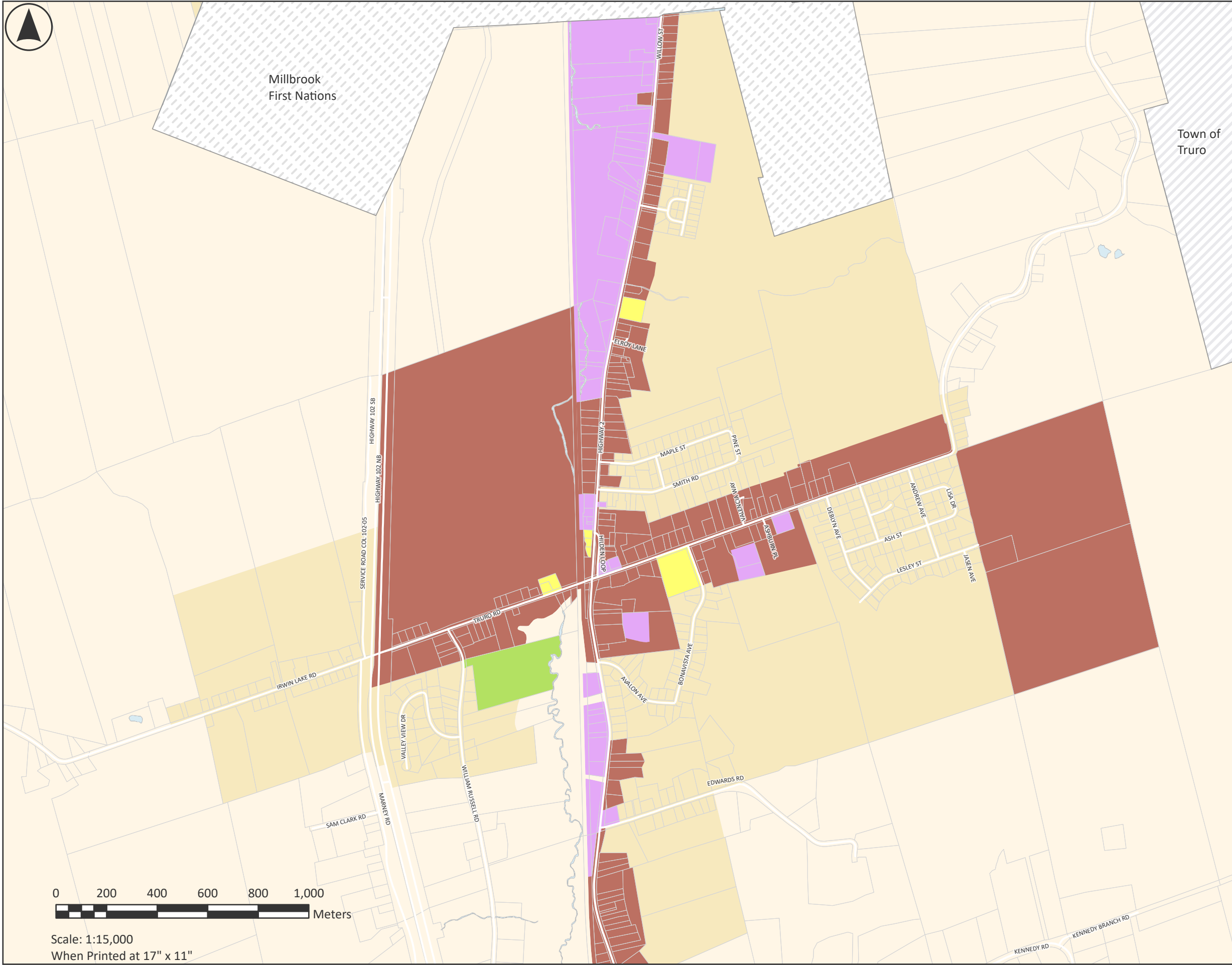


Millbrook
First Nations

Town of
Truro

HILDEN FUTURE LAND USE MAP SCHEDULE B

- I Institutional
- C Commercial
- CDD Comprehensive Development District
- M Industrial
- POS Parks and Open Spaces
- R Rural
- RLD Low Density Residential
- RMHD Medium-High Density Residential
- Water Bodies



Scale: 1:15,000
When Printed at 17" x 11"



Notes

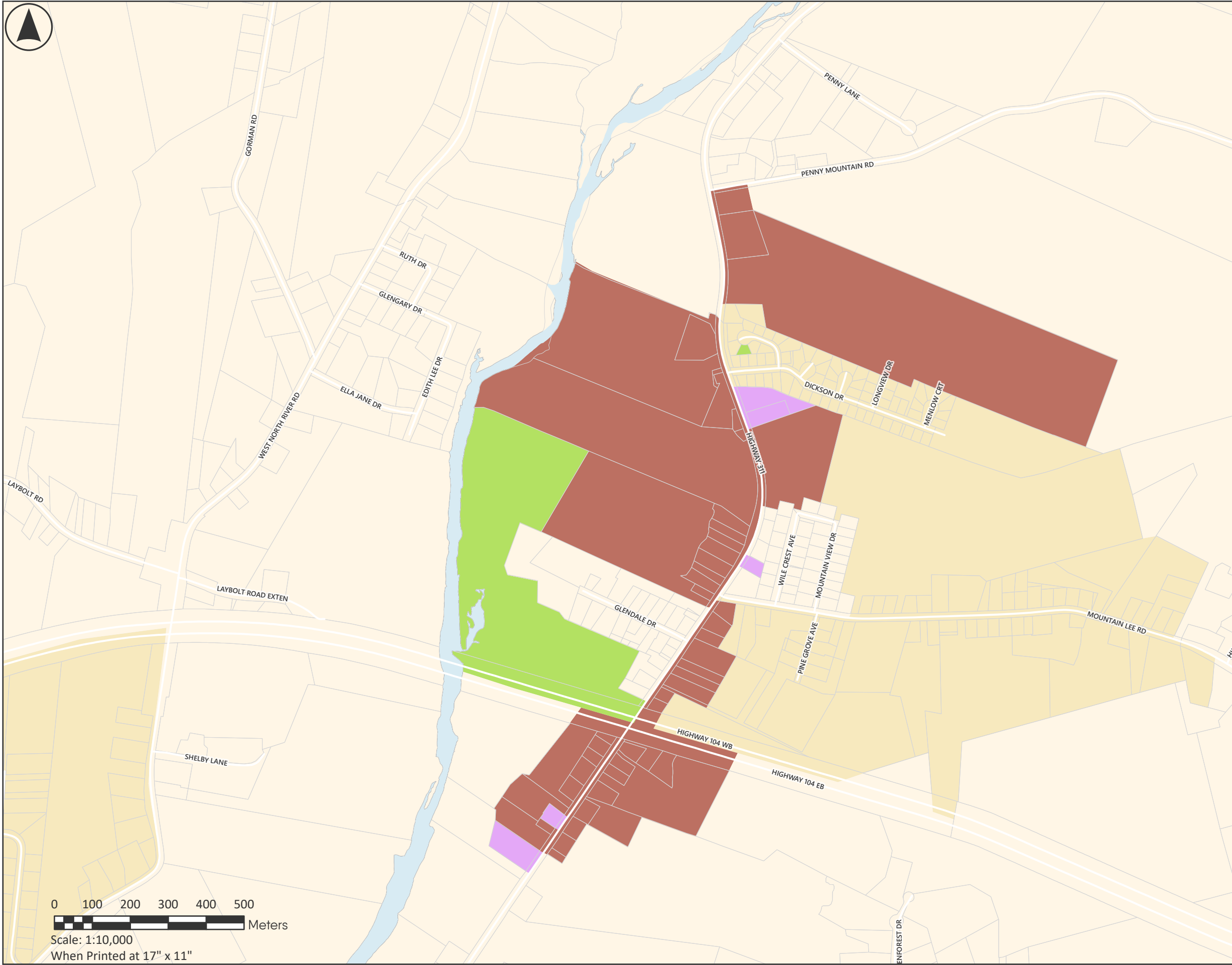
Property information provided by
Land Information Services of Service Nova Scotia
and Municipal Relations

Maps Originally Generated with ArcGIS
June 5, 2025

Current Version updated 2025



NORTH RIVER FUTURE LAND USE MAP SCHEDULE B



- I Institutional
- C Commercial
- CDD Comprehensive Development District
- M Industrial
- POS Parks and Open Spaces
- R Rural
- RLD Low Density Residential
- RMHD Medium-High Density Residential
- Water Bodies

0 100 200 300 400 500
 Meters
 Scale: 1:10,000
 When Printed at 17" x 11"

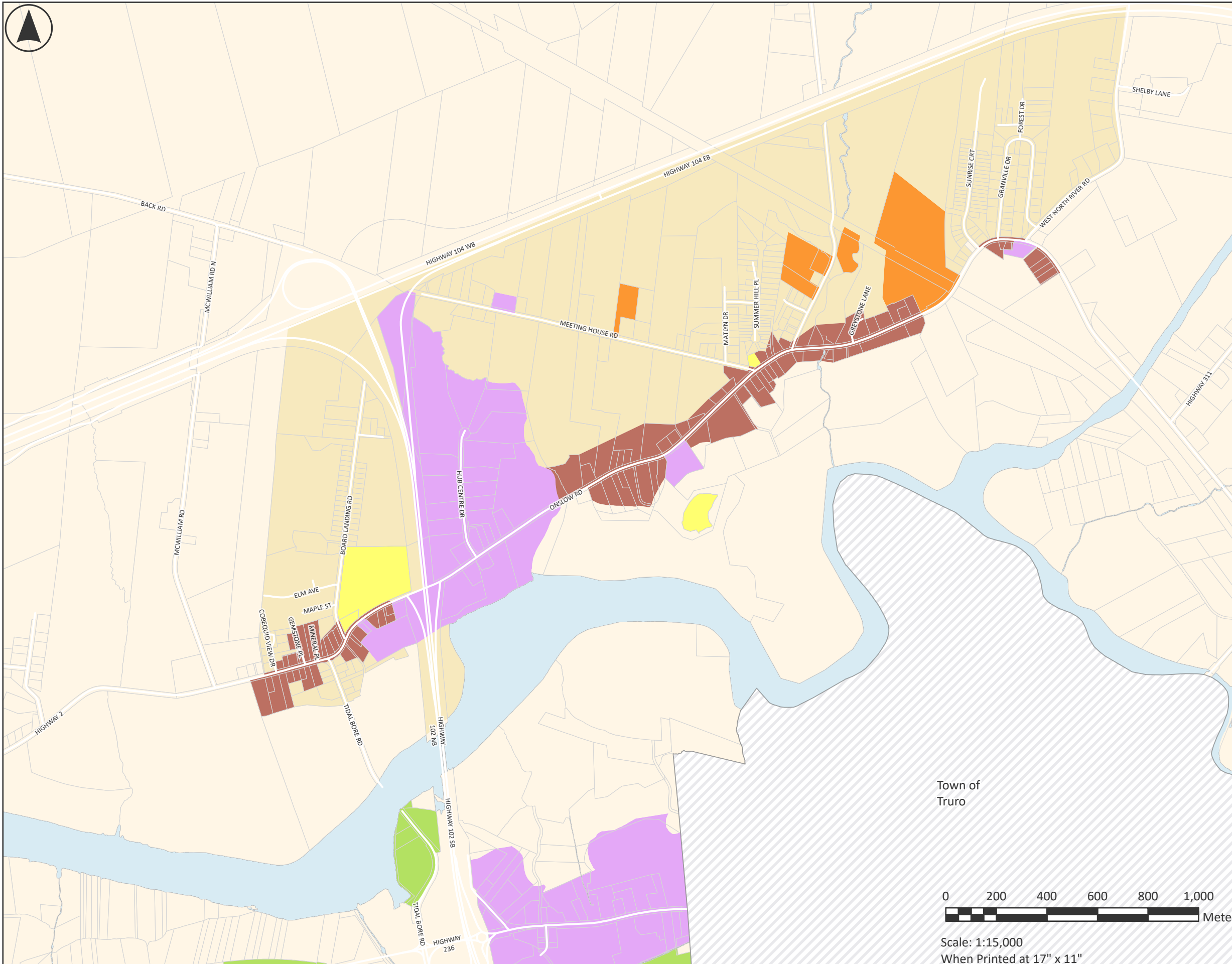


Notes

Property information provided by
 Land Information Services of Service Nova Scotia
 and Municipal Relations
 Maps Originally Generated with ArcGIS
 June 5, 2025
 Current Version updated 2025



ONSLow FUTURE LAND USE MAP SCHEDULE B



- I Institutional
- C Commercial
- CDD Comprehensive Development District
- M Industrial
- POS Parks and Open Spaces
- R Rural
- RLD Low Density Residential
- RMHD Medium-High Density Residential
- Water Bodies

Town of
Truro



Scale: 1:15,000
When Printed at 17" x 11"

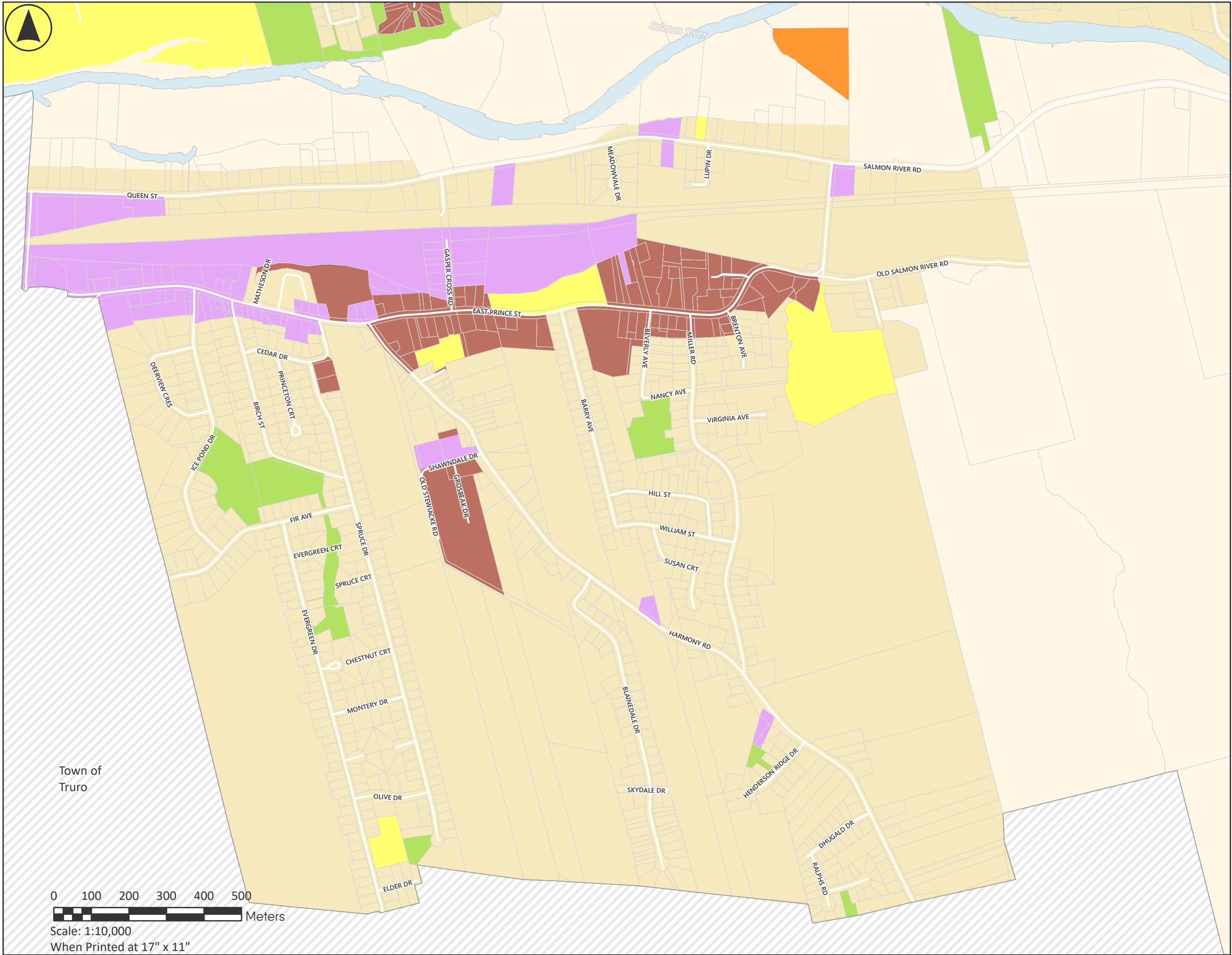


Notes

Property information provided by
Land Information Services of Service Nova Scotia
and Municipal Relations

Maps Originally Generated with ArcGIS
June 5, 2025

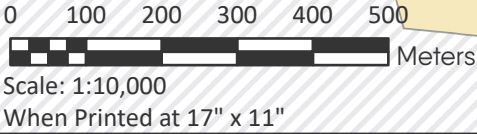
Current Version updated 2025



SALMON RIVER FUTURE LAND USE MAP SCHEDULE B

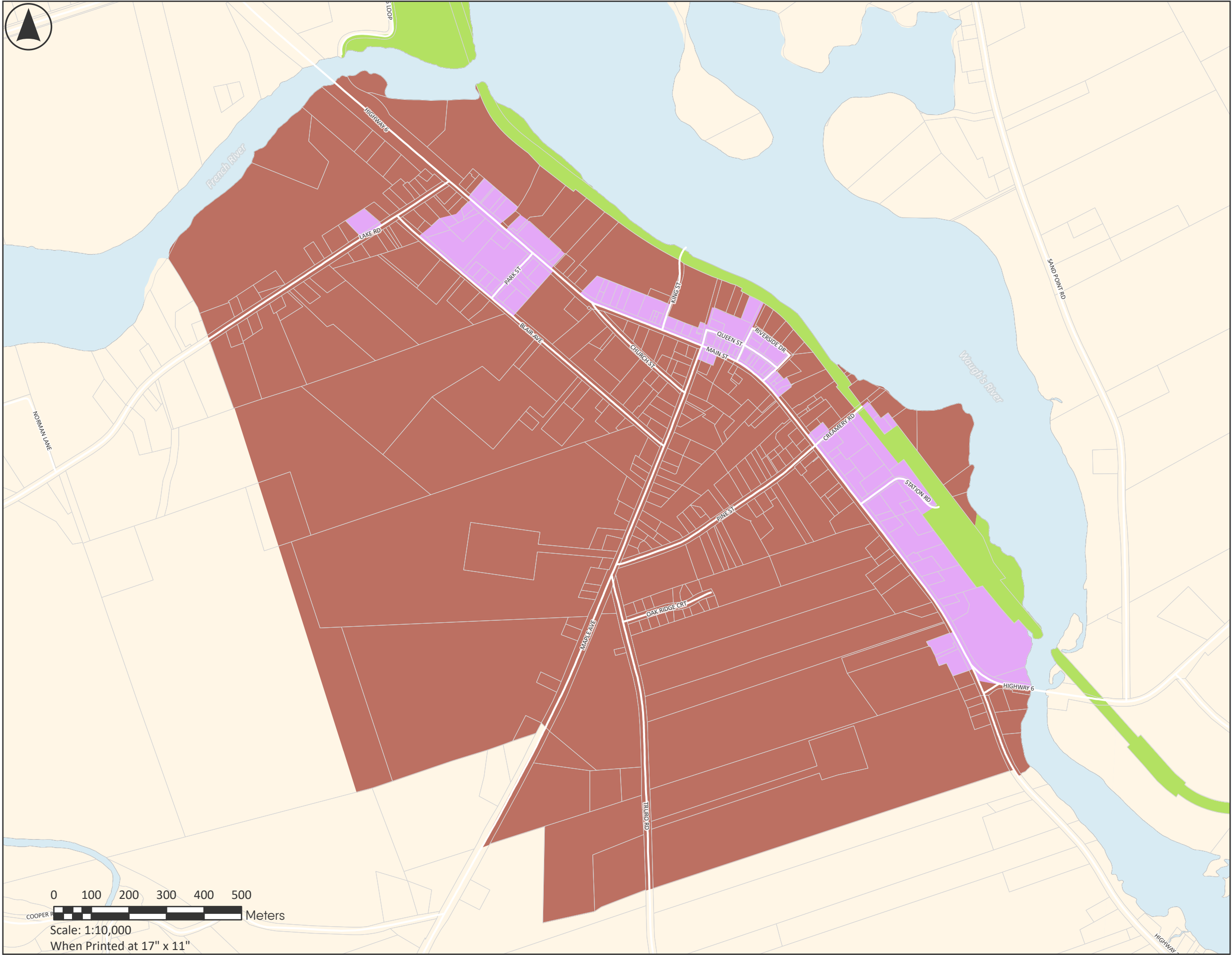
- I Institutional
- C Commercial
- CDD Comprehensive Development District
- M Industrial
- POS Parks and Open Spaces
- R Rural
- RLD Low Density Residential
- RMHD Medium-High Density Residential
- Water Bodies

Town of Truro



Notes

Property information provided by Land Information Services of Service Nova Scotia and Municipal Relations
Maps Originally Generated with ArcGIS
June 5, 2025
Current Version updated 2025



TATAMAGOUCHE FUTURE LAND USE MAP SCHEDULE B

- I Institutional
- C Commercial
- CDD Comprehensive Development District
- M Industrial
- POS Parks and Open Spaces
- R Rural
- RLD Low Density Residential
- RMHD Medium-High Density Residential
- Water Bodies



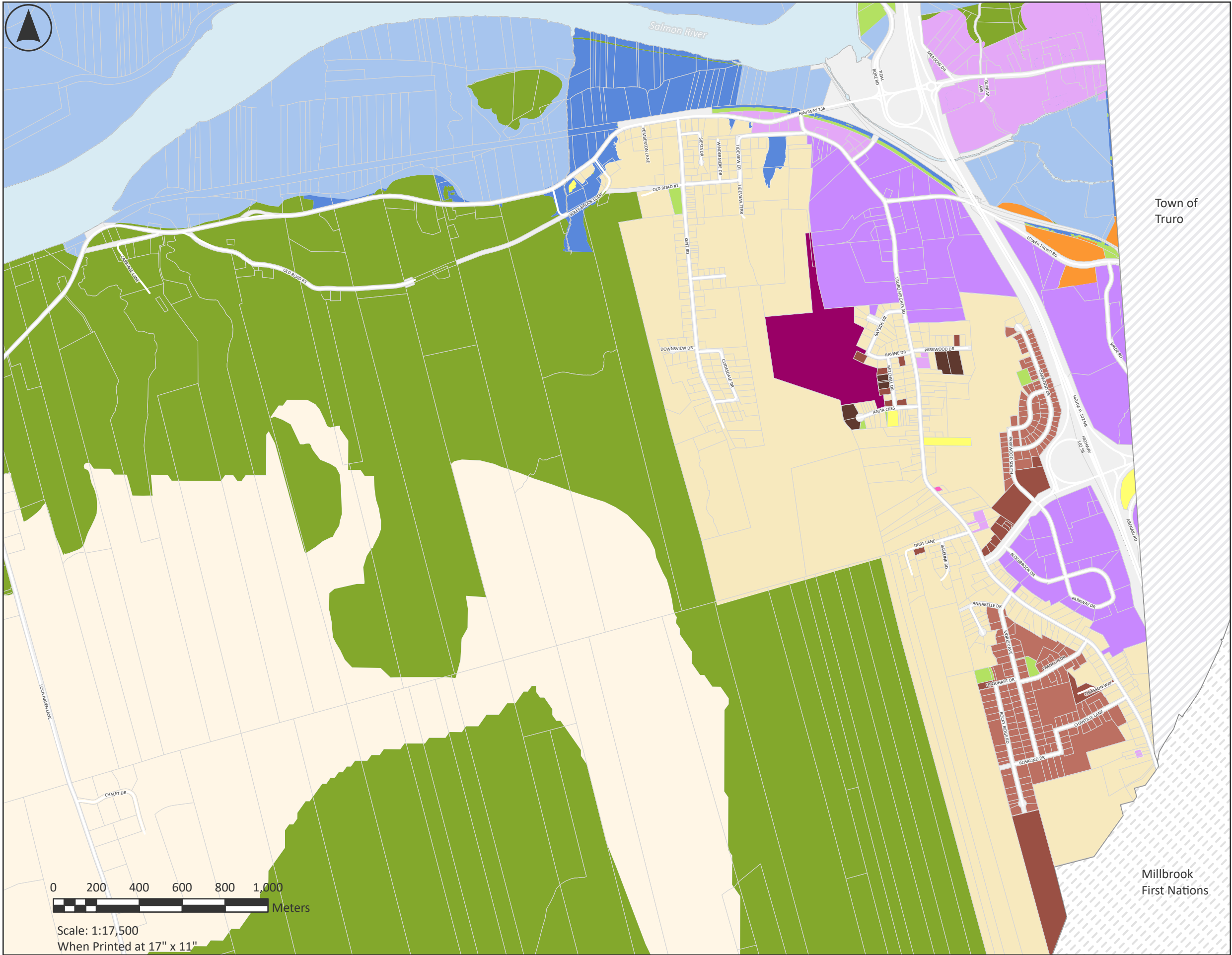
Notes

Property information provided by
Land Information Services of Service Nova Scotia
and Municipal Relations

Maps Originally Generated with ArcGIS
June 5, 2025

Current Version updated 2025

0 100 200 300 400 500
Meters
Scale: 1:10,000
When Printed at 17" x 11"

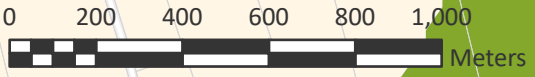


TRURO HEIGHTS FUTURE LAND USE MAP SCHEDULE B

- I Institutional
- C Commercial
- CDD Comprehensive Development District
- M Industrial
- POS Parks and Open Spaces
- R Rural
- RLD Low Density Residential
- RMHD Medium-High Density Residential
- Water Bodies

Town of Truro

Millbrook First Nations



Scale: 1:17,500
When Printed at 17" x 11"



Notes

Property information provided by Land Information Services of Service Nova Scotia and Municipal Relations

Maps Originally Generated with ArcGIS
June 5, 2025

Current Version updated 2025