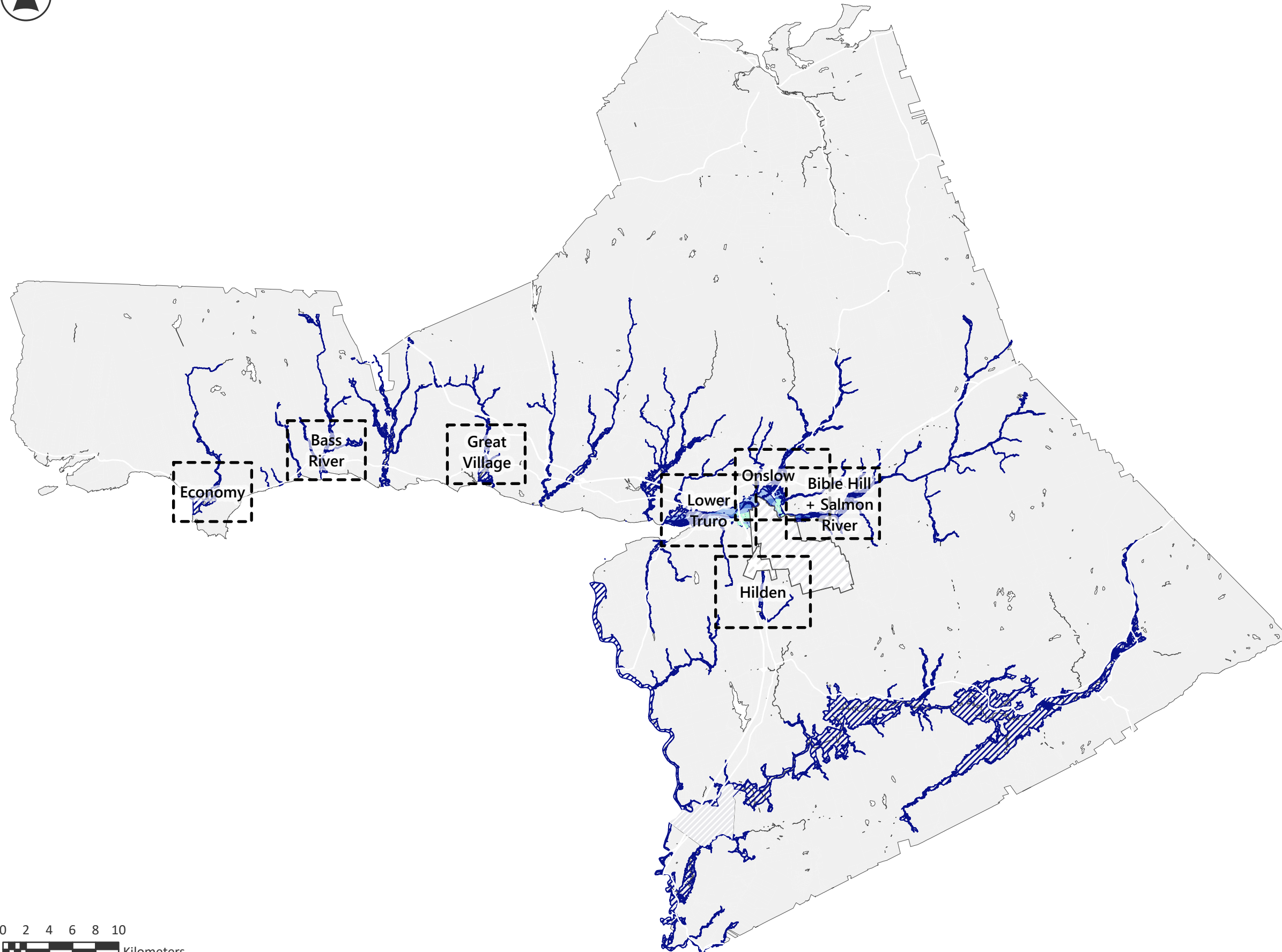





FLOOD OVERLAY

SCHEDULE B

-  E-1 Flow Way
-  E-2 Flood Way
-  E_3 Flood Way Modified
-  E-4 Flood Way Fringe
-  Town of Truro
-  Millbrook First Nations
-  Town of Stewiacke
-  Inset Map Extent



0 2 4 6 8 10
 Kilometers
 Scale: 1:350,000
 When Printed at 17" x 11"



Notes

Property information provided by
 Land Information Services of Service Nova Scotia
 and Municipal Relations

Maps Originally Generated with ArcGIS
 June 5, 2025

Current Version updated 2025



BASS RIVER FLOOD OVERLAY

SCHEDULE B

-  E-1 Flow Way
-  E-2 Flood Way
-  E_3 Flood Way Modified
-  E-4 Flood Way Fringe
-  Minas Basin

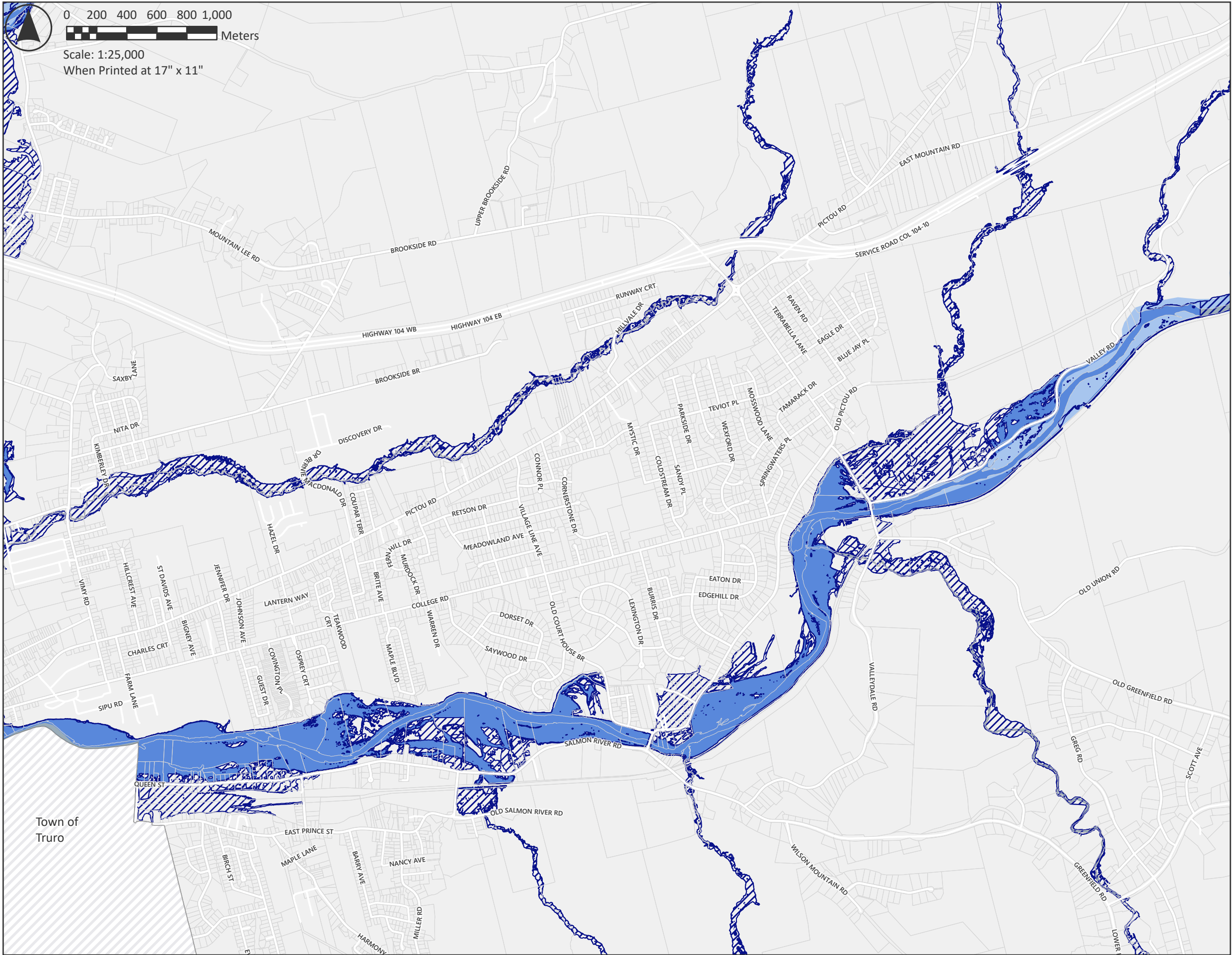
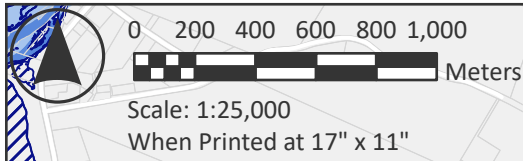


Notes

Property information provided by
Land Information Services of Service Nova Scotia
and Municipal Relations

Maps Originally Generated with ArcGIS
June 5, 2025

Current Version updated 2025



BIBLE HILL + SALMON RIVER FLOOD OVERLAY

SCHEDULE B

- E-1 Flow Way
- E-2 Flood Way
- E_3 Flood Way Modified
- E-4 Flood Way Fringe
- Water Bodies

Town of Truro

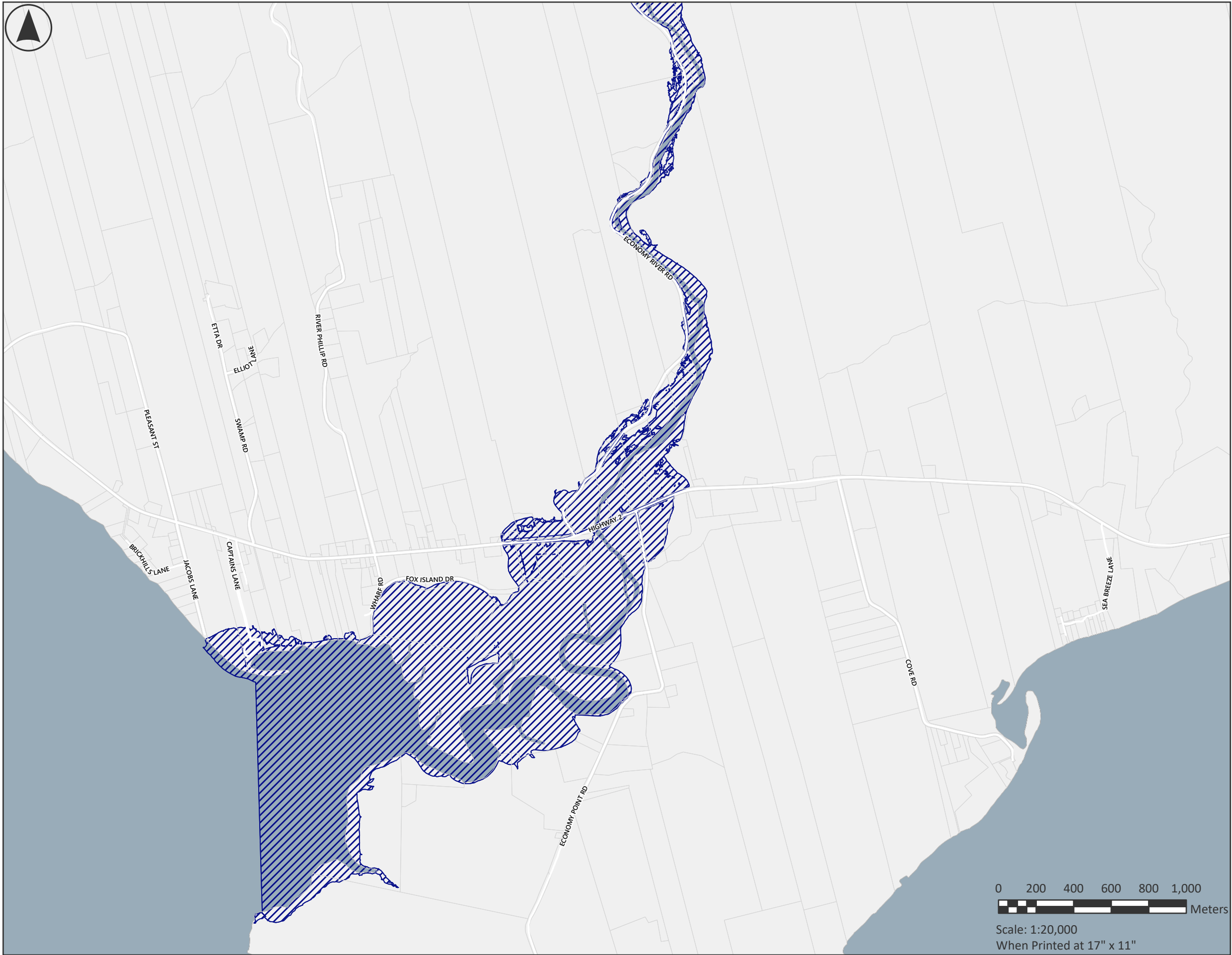


Notes

Property information provided by Land Information Services of Service Nova Scotia and Municipal Relations

Maps Originally Generated with ArcGIS June 5, 2025

Current Version updated 2025



ECONOMY FLOOD OVERLAY

SCHEDULE B

-  E-1 Flow Way
-  E-2 Flood Way
-  E_3 Flood Way Modified
-  E-4 Flood Way Fringe
-  Minas Basin



Notes

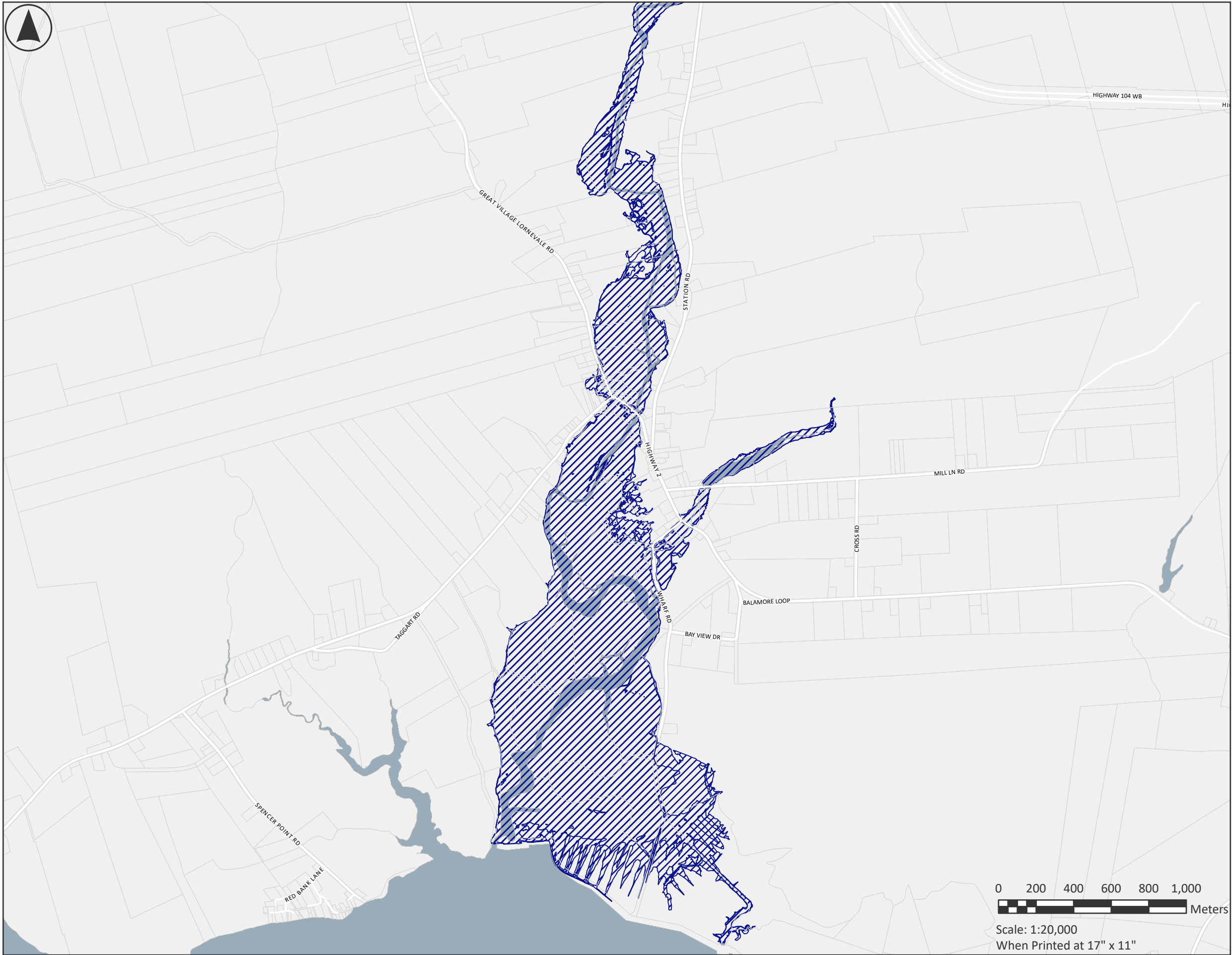
Property information provided by Land Information Services of Service Nova Scotia and Municipal Relations

Maps Originally Generated with ArcGIS June 5, 2025

Current Version updated 2025



Scale: 1:20,000
When Printed at 17" x 11"



GREAT VILLAGE FLOOD OVERLAY

SCHEDULE B

- E-1 Flow Way
- E-2 Flood Way
- E_3 Flood Way Modified
- E-4 Flood Way Fringe
- Water Bodies



Notes

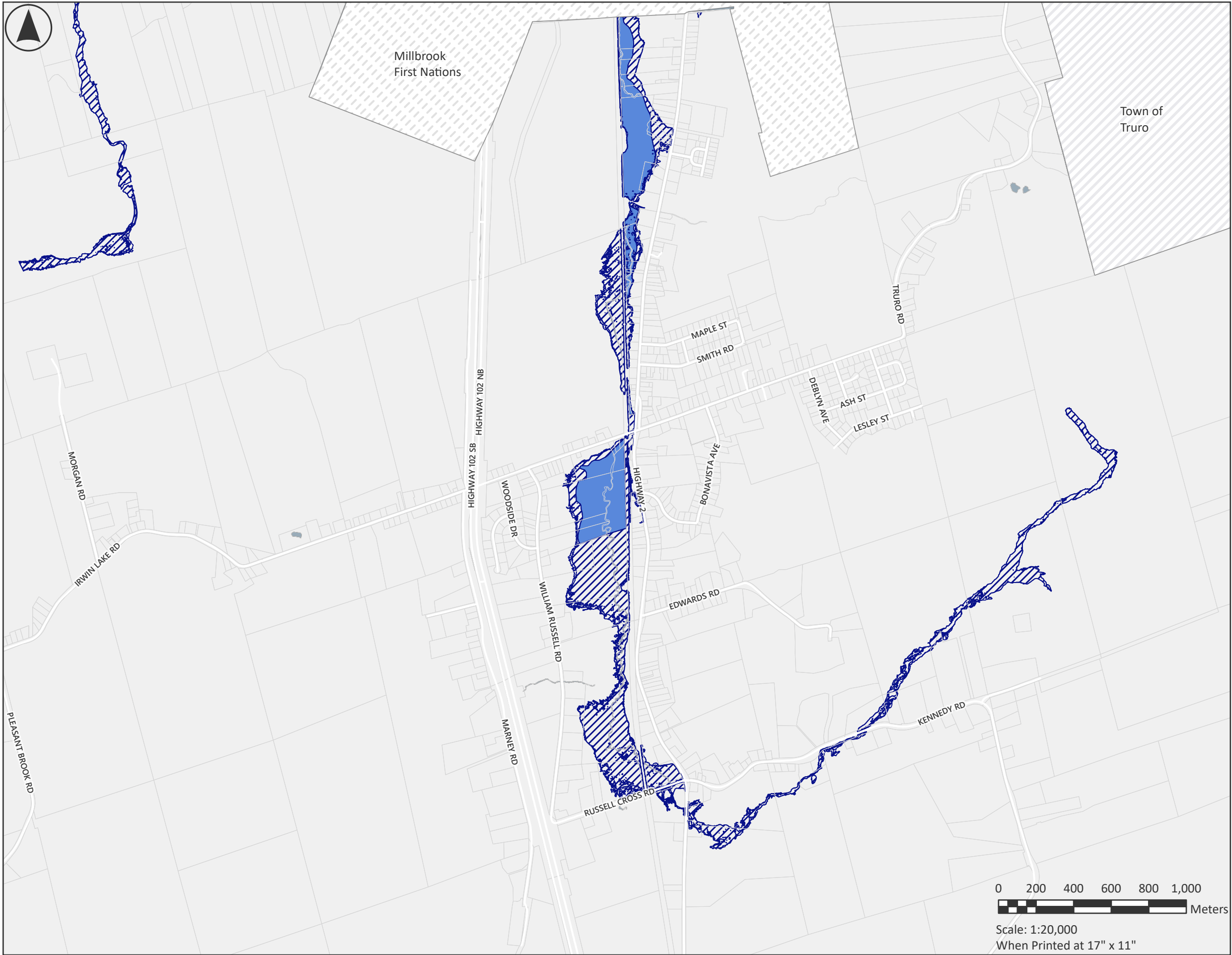
Property information provided by Land Information Services of Service Nova Scotia and Municipal Relations

Maps Originally Generated with ArcGIS June 5, 2025

Current Version updated 2025



Scale: 1:20,000
When Printed at 17" x 11"



HILDEN FLOOD OVERLAY

SCHEDULE B

- E-1 Flow Way
- E-2 Flood Way
- E_3 Flood Way Modified
- E-4 Flood Way Fringe
- Water Bodies



Scale: 1:20,000
When Printed at 17" x 11"

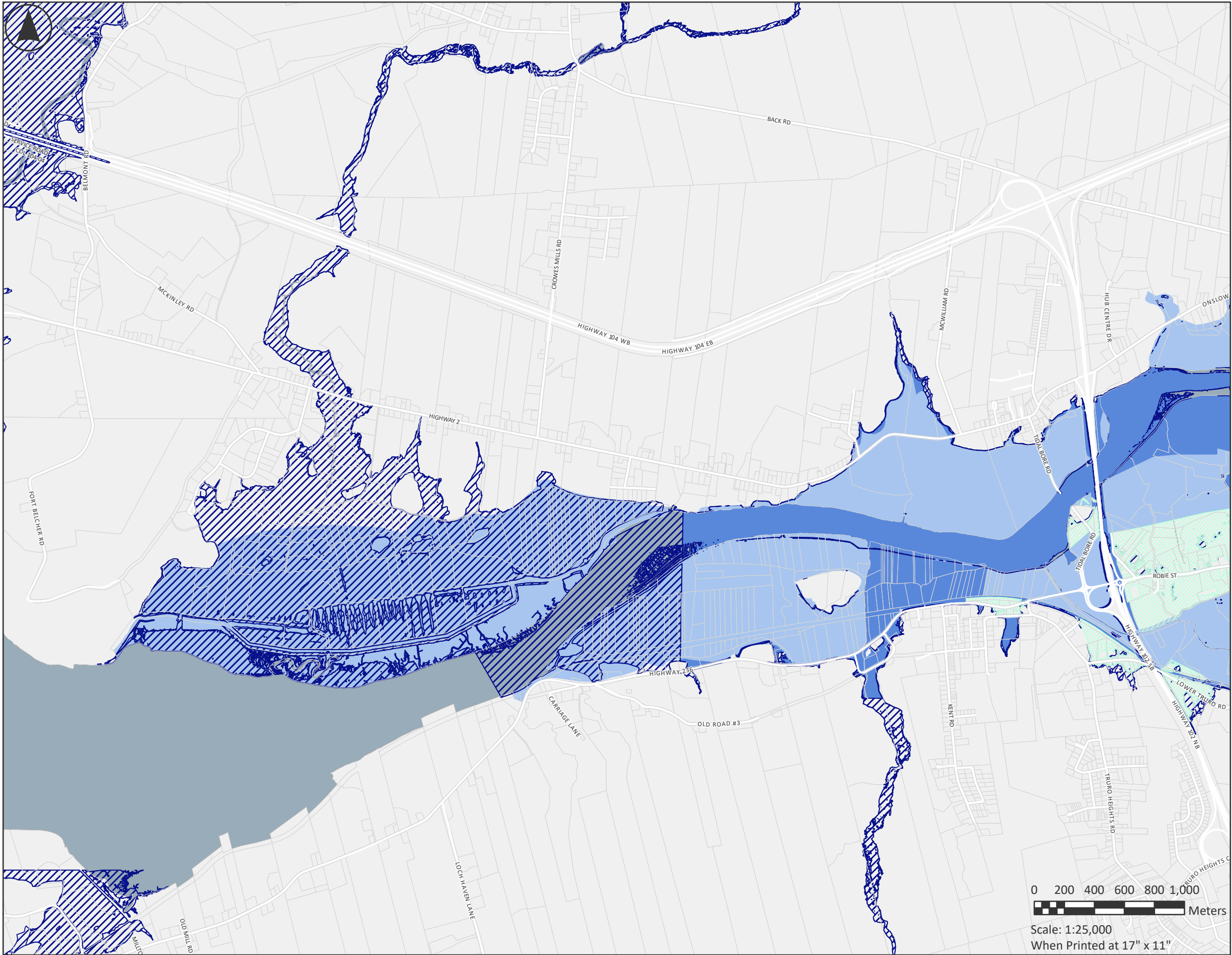


Notes

Property information provided by Land Information Services of Service Nova Scotia and Municipal Relations

Maps Originally Generated with ArcGIS
June 5, 2025


Current Version updated 2025



LOWER TRURO FLOOD OVERLAY

SCHEDULE B

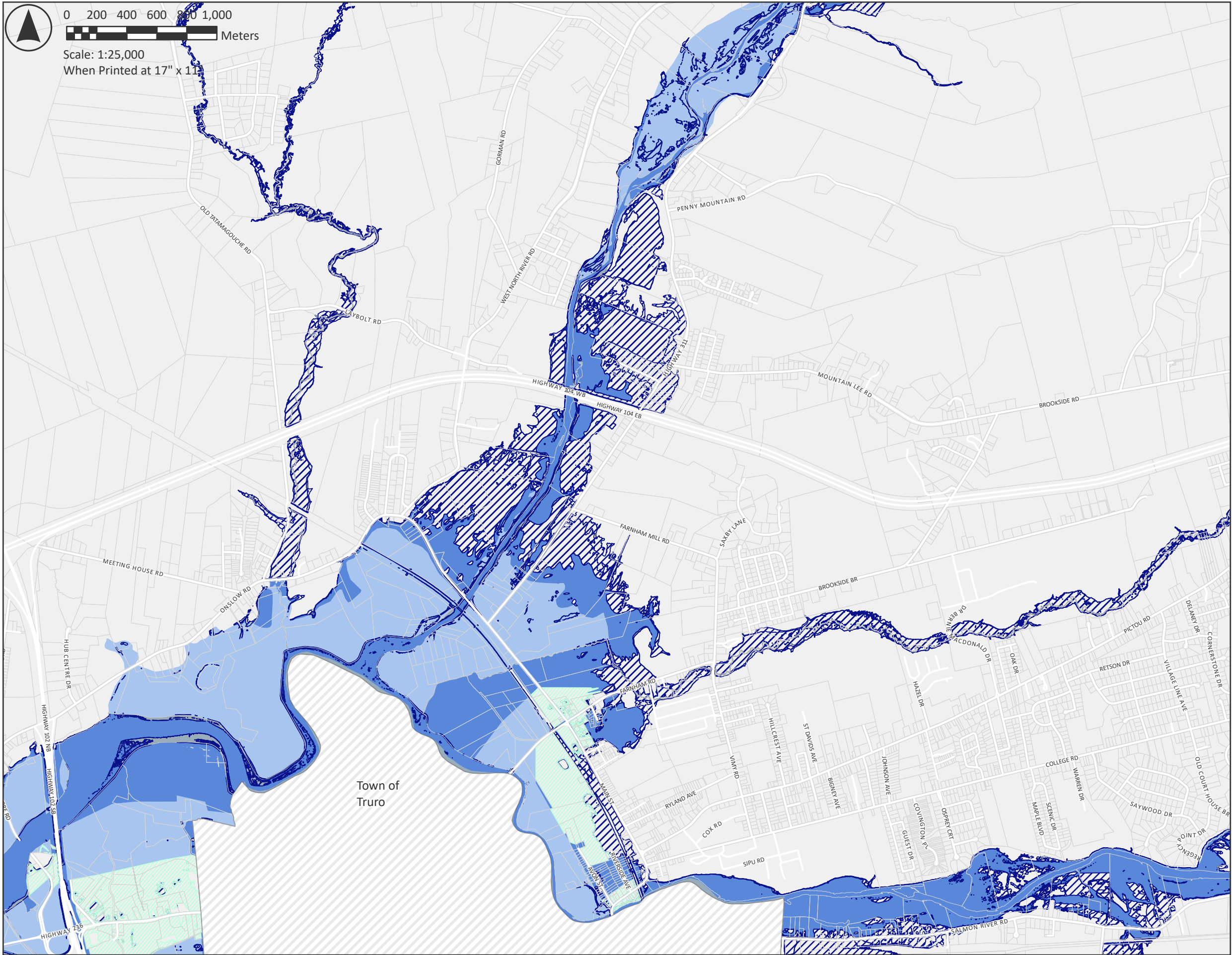
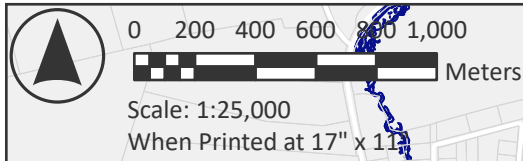
- E-1 Flow Way
- E-2 Flood Way
- E_3 Flood Way Modified
- E-4 Flood Way Fringe
- Water Bodies

0 200 400 600 800 1,000
 Meters
 Scale: 1:25,000
 When Printed at 17" x 11"



Notes

Property information provided by
 Land Information Services of Service Nova Scotia
 and Municipal Relations
 Maps Originally Generated with ArcGIS
 June 5, 2025
 Current Version updated 2025



ONSLOW FLOOD OVERLAY

SCHEDULE B

- E-1 Flow Way
- E-2 Flood Way
- E_3 Flood Way Modified
- E-4 Flood Way Fringe
- Water Bodies

Town of Truro



Notes

Property information provided by Land Information Services of Service Nova Scotia and Municipal Relations

Maps Originally Generated with ArcGIS June 5, 2025

Current Version updated 2025