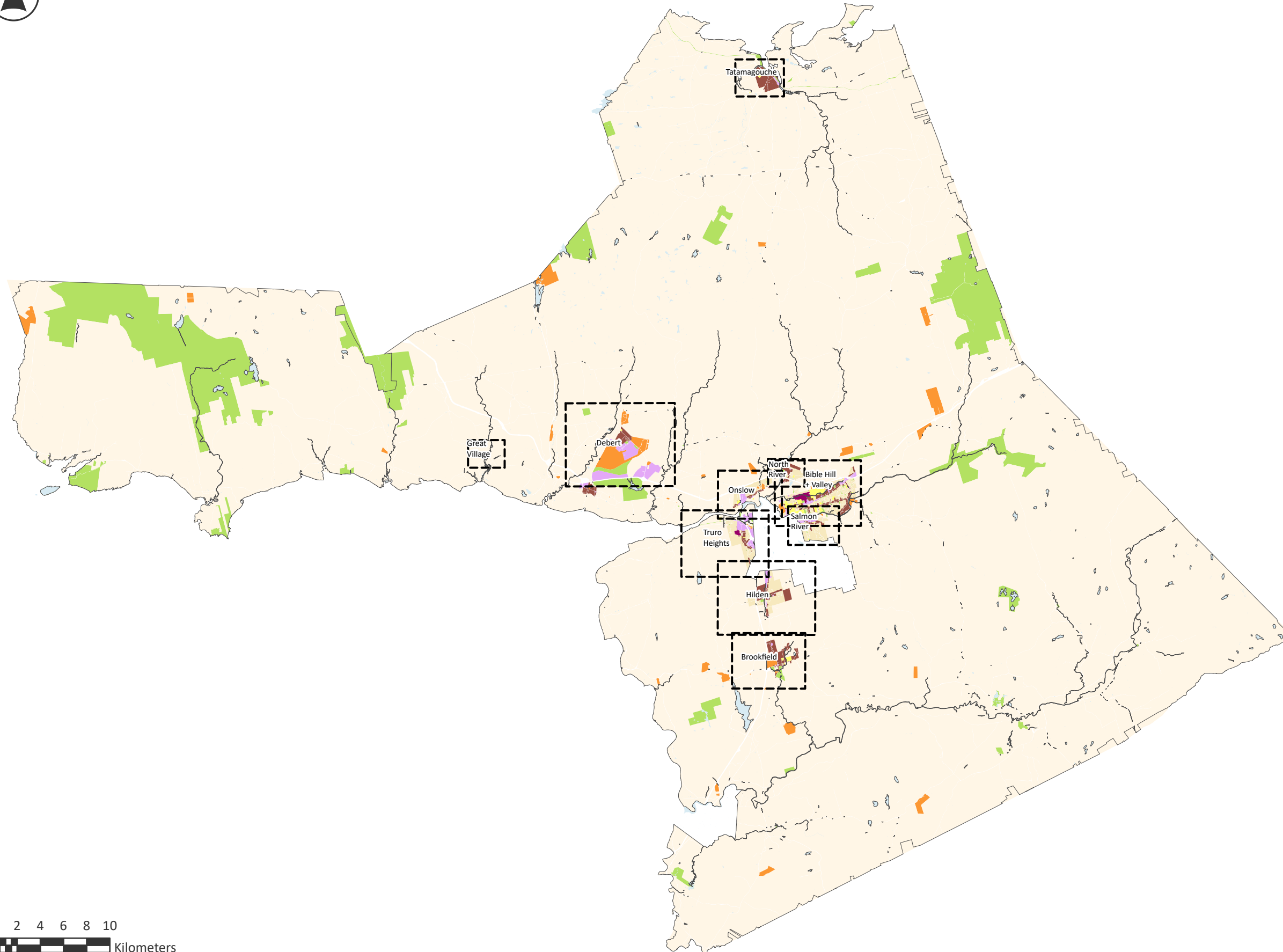


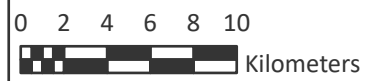


FUTURE LAND USE

SCHEDULE B



- I Institutional
- C Commercial
- CDD Comprehensive Development District
- M Industrial
- POS Parks and Open Spaces
- R Rural
- RLD Low Density Residential
- RMHD Medium-High Density Residential
- Water Bodies



Scale: 1:350,000
When Printed at 17" x 11"

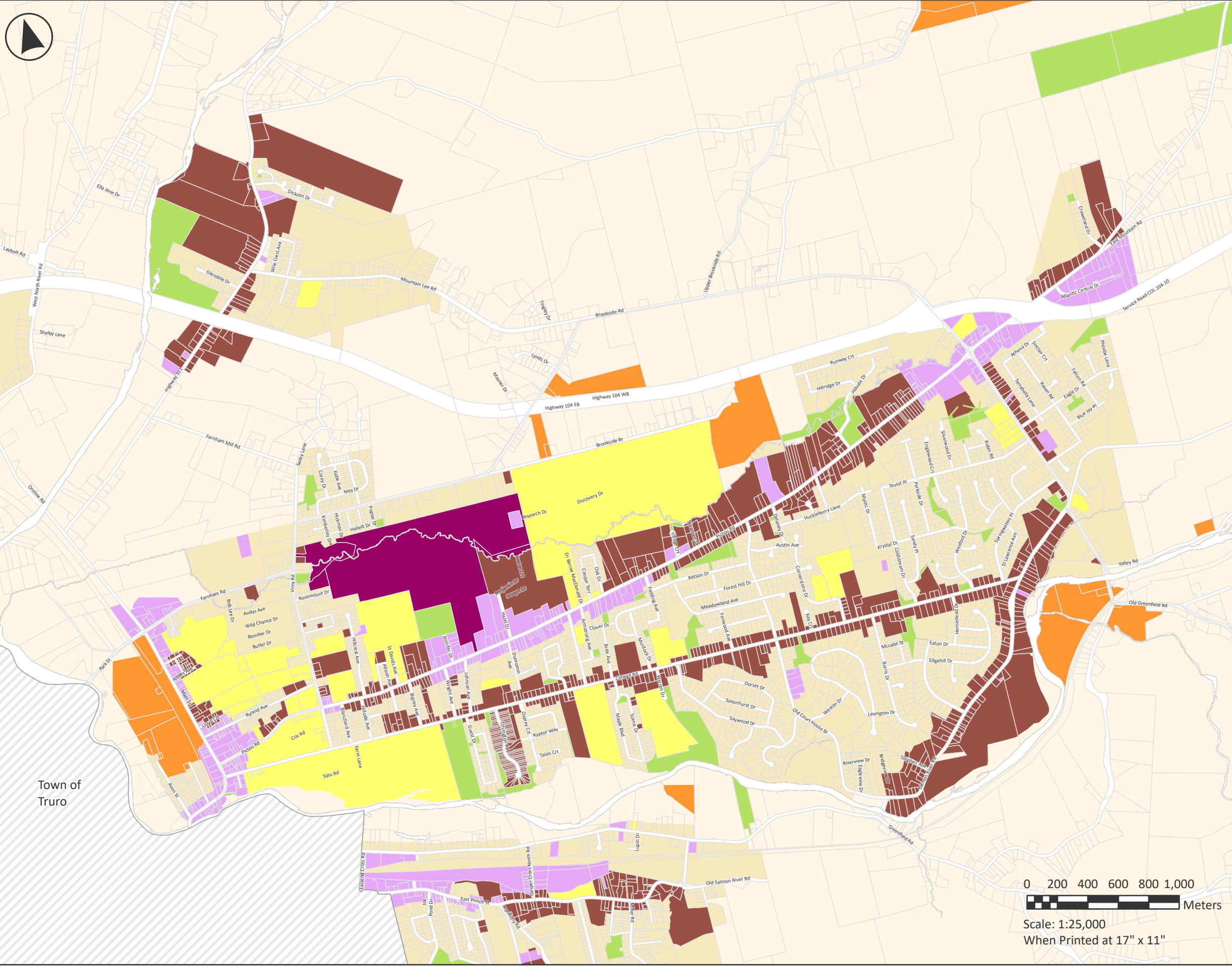


Notes

Property information provided by
Land Information Services of Service Nova Scotia
and Municipal Relations.

Maps originally generated with ArcGIS
June 5, 2025.

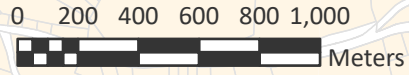
Current Version updated 2026.



BIBLE HILL + VALLEY FUTURE LAND USE SCHEDULE B

- I Institutional
- C Commercial
- CDD Comprehensive Development District
- M Industrial
- POS Parks and Open Spaces
- R Rural
- RLD Low Density Residential
- RMHD Medium-High Density Residential

Town of Truro



Scale: 1:25,000
When Printed at 17" x 11"

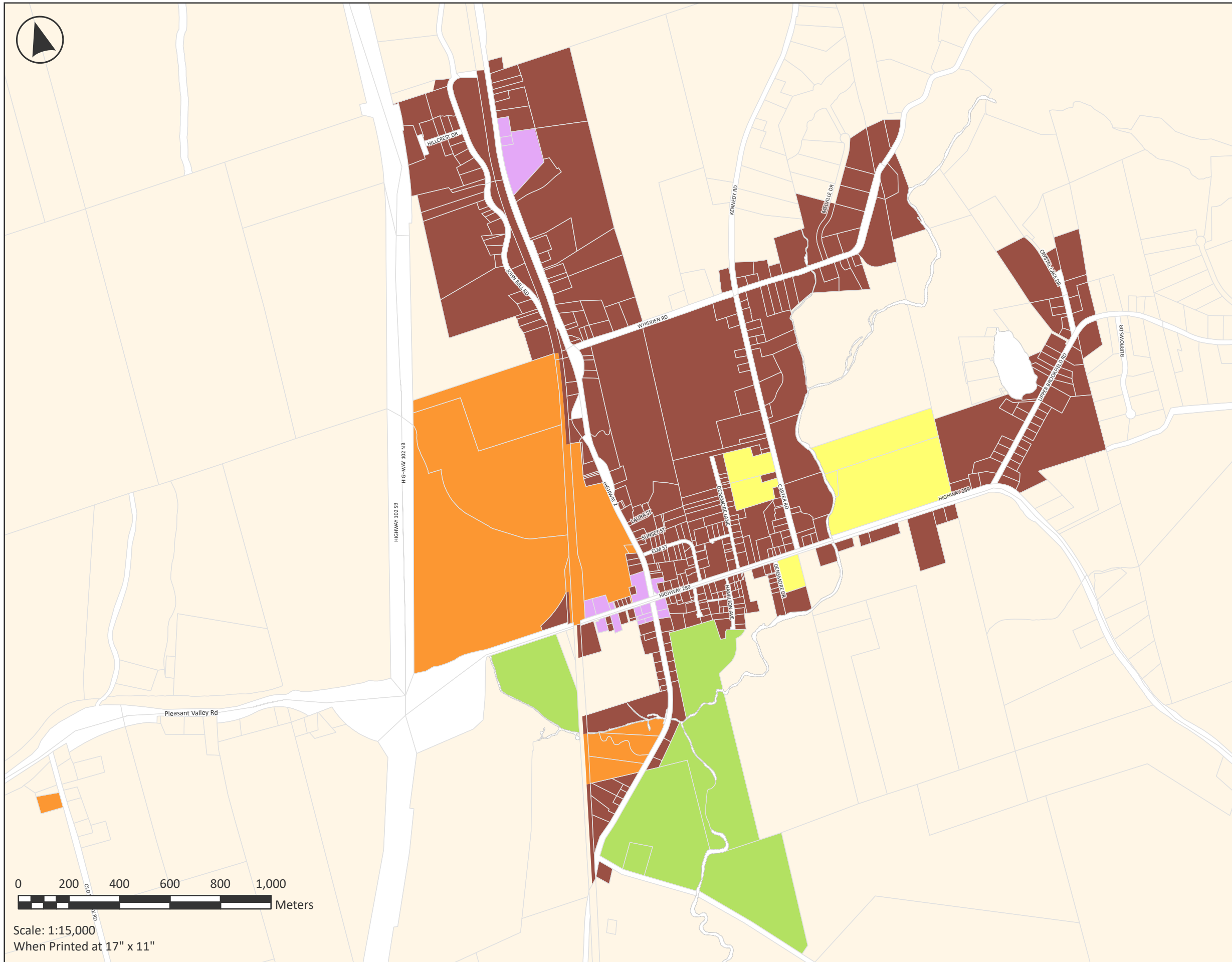


Notes
 Property information provided by
 Land Information Services of Service Nova Scotia
 and Municipal Relations.
 Maps originally generated with ArcGIS
 June 5, 2025.
 Current Version updated 2026.



BROOKFIELD FUTURE LAND USE SCHEDULE B

- I Institutional
- C Commercial
- CDD Comprehensive Development District
- M Industrial
- POS Parks and Open Spaces
- R Rural
- RLD Low Density Residential
- RMHD Medium-High Density Residential



Scale: 1:15,000
When Printed at 17" x 11"

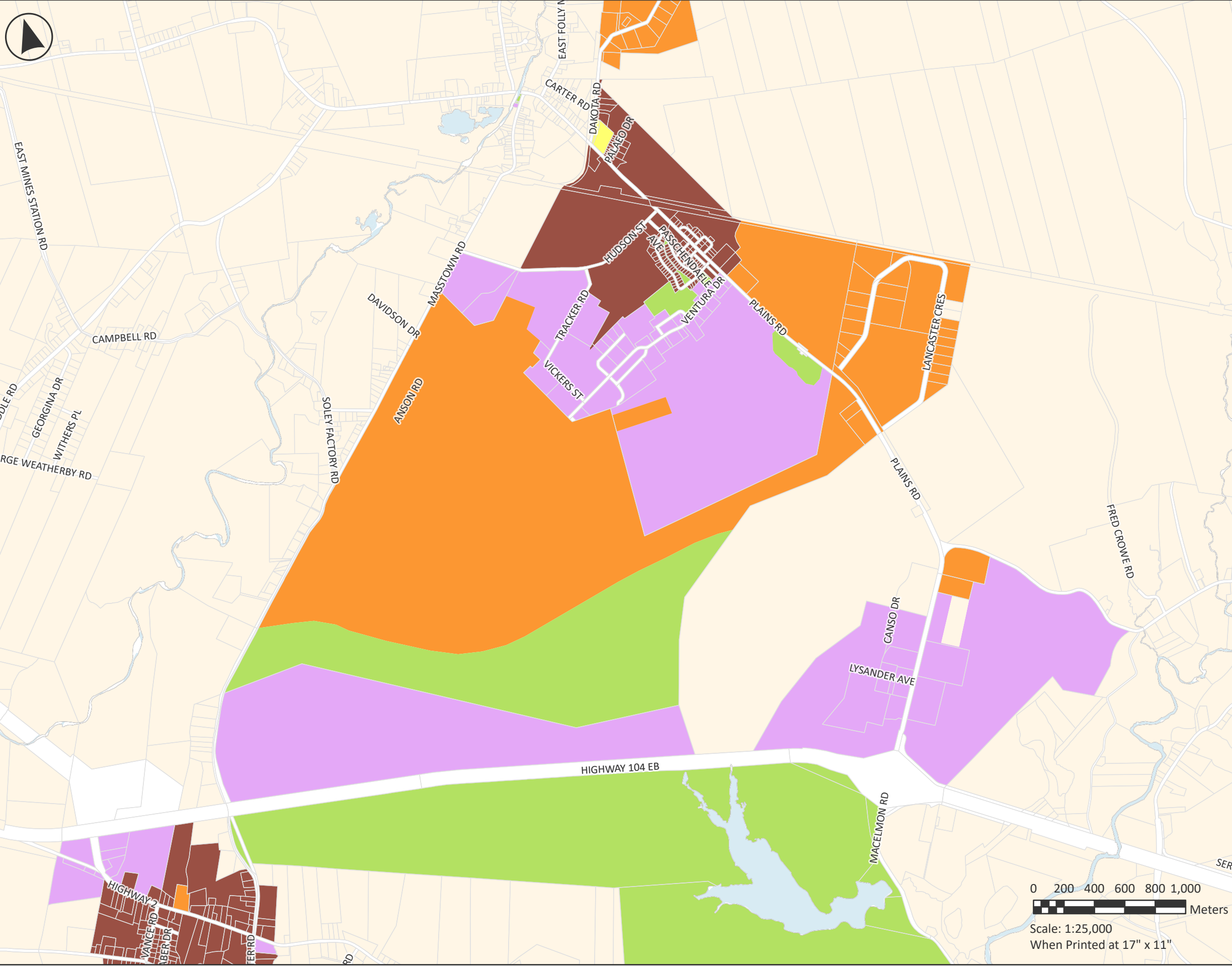


Notes

Property information provided by
Land Information Services of Service Nova Scotia
and Municipal Relations.

Maps originally generated with ArcGIS
June 5, 2025.

Current Version updated 2026.



DEBERT FUTURE LAND USE SCHEDULE B

- I Institutional
- C Commercial
- CDD Comprehensive Development District
- M Industrial
- POS Parks and Open Spaces
- R Rural
- RLD Low Density Residential
- RMHD Medium-High Density Residential
- Water Bodies



Scale: 1:25,000
When Printed at 17" x 11"

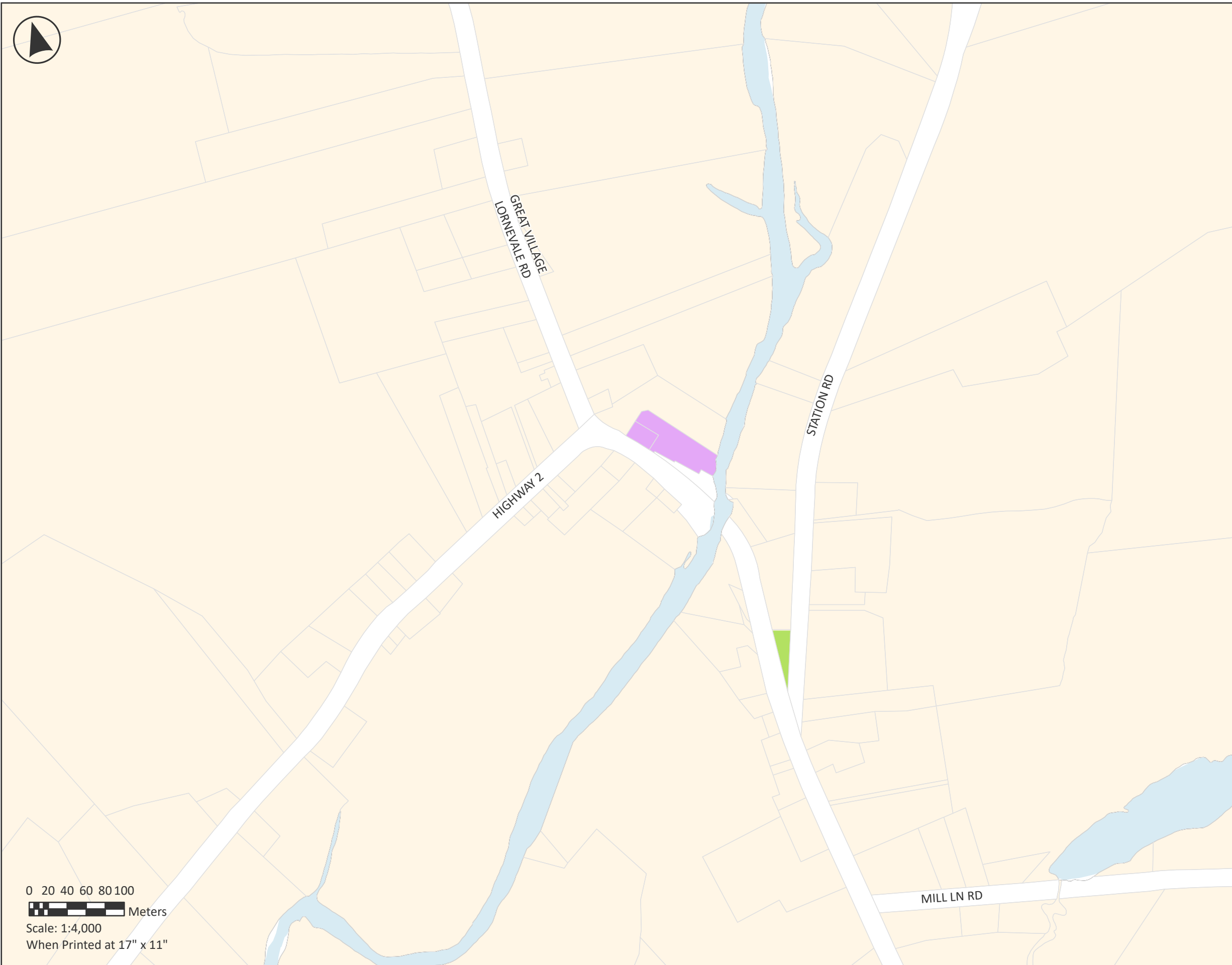


Notes
 Property information provided by
 Land Information Services of Service Nova Scotia
 and Municipal Relations.
 Maps originally generated with ArcGIS
 June 5, 2025.
 Current Version updated 2026.



GREAT VILLAGE FUTURE LAND USE SCHEDULE B

- I Institutional
- C Commercial
- CDD Comprehensive Development District
- M Industrial
- POS Parks and Open Spaces
- R Rural
- RLD Low Density Residential
- RMHD Medium-High Density Residential
- Water Bodies



0 20 40 60 80 100
Meters
Scale: 1:4,000
When Printed at 17" x 11"



Notes
Property information provided by
Land Information Services of Service Nova Scotia
and Municipal Relations.
Maps originally generated with ArcGIS
June 5, 2025.
Current Version updated 2026.

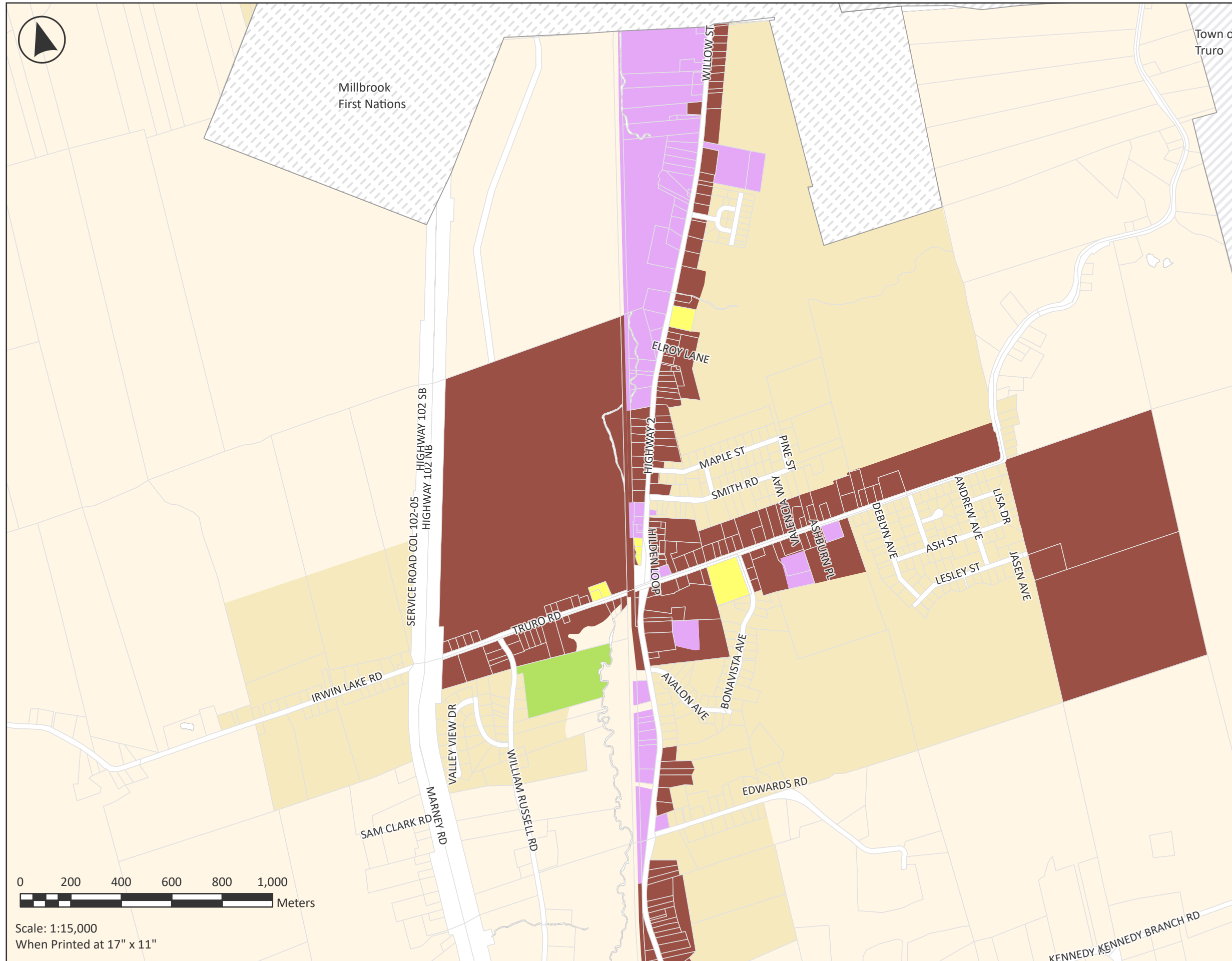


Millbrook
First Nations

Town of
Truro

HILDEN FUTURE LAND USE SCHEDULE B

- I Institutional
- C Commercial
- CDD Comprehensive Development District
- M Industrial
- POS Parks and Open Spaces
- R Rural
- RLD Low Density Residential
- RMHD Medium-High Density Residential



Scale: 1:15,000
When Printed at 17" x 11"



Notes

Property information provided by
Land Information Services of Service Nova Scotia
and Municipal Relations.

Maps originally generated with ArcGIS
June 5, 2025.

Current Version updated 2026.

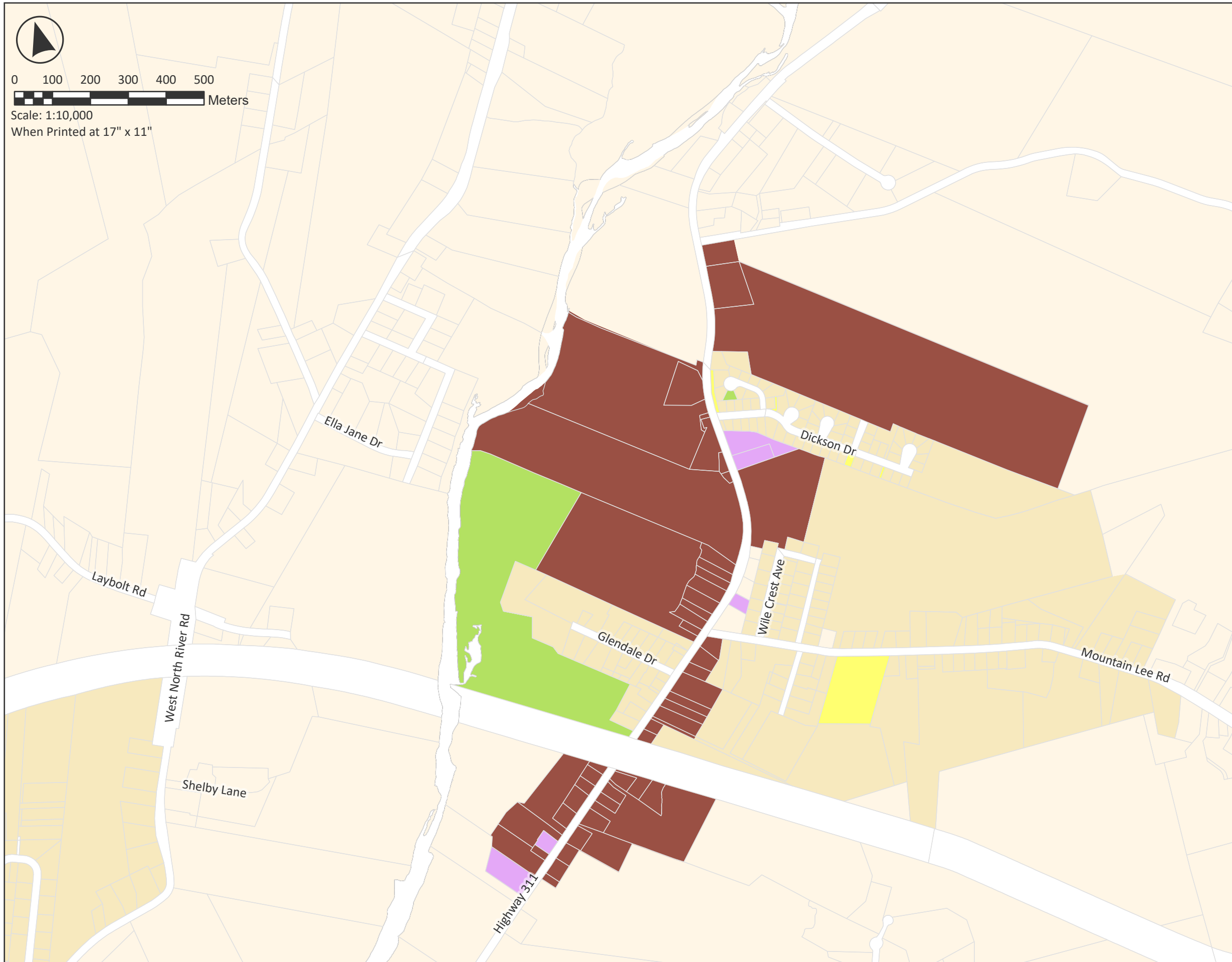


0 100 200 300 400 500
Meters

Scale: 1:10,000
When Printed at 17" x 11"

NORTH RIVER FUTURE LAND USE SCHEDULE B

- I Institutional
- C Commercial
- CDD Comprehensive Development District
- M Industrial
- POS Parks and Open Spaces
- R Rural
- RLD Low Density Residential
- RMHD Medium-High Density Residential



Notes
Property information provided by
Land Information Services of Service Nova Scotia
and Municipal Relations.

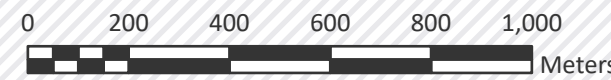
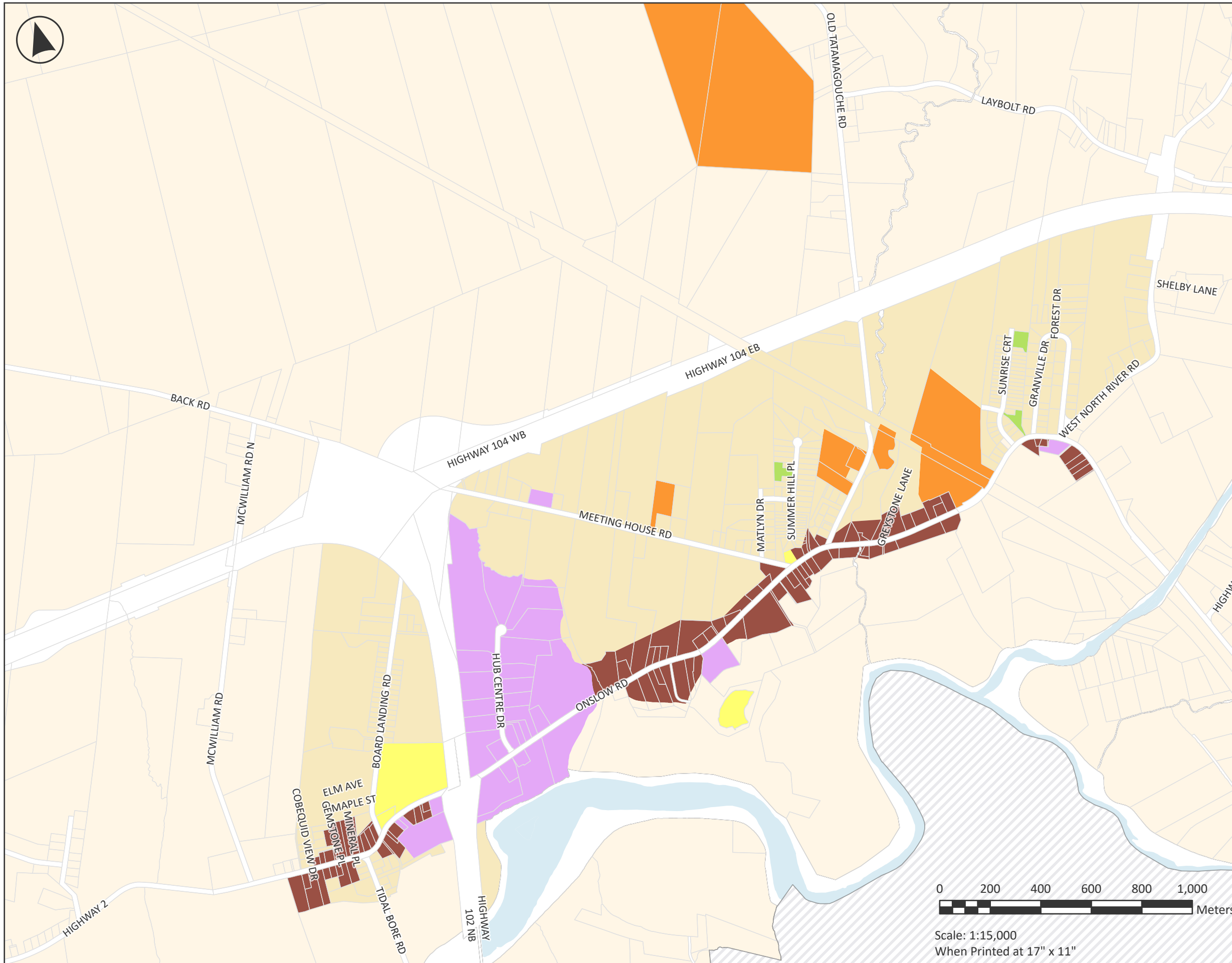
Maps originally generated with ArcGIS
June 5, 2025.

Current Version updated 2026.



ONSLOW FUTURE LAND USE SCHEDULE B

- I Institutional
- C Commercial
- CDD Comprehensive Development District
- M Industrial
- POS Parks and Open Spaces
- R Rural
- RLD Low Density Residential
- RMHD Medium-High Density Residential
- Town of Truro



Scale: 1:15,000
When Printed at 17" x 11"

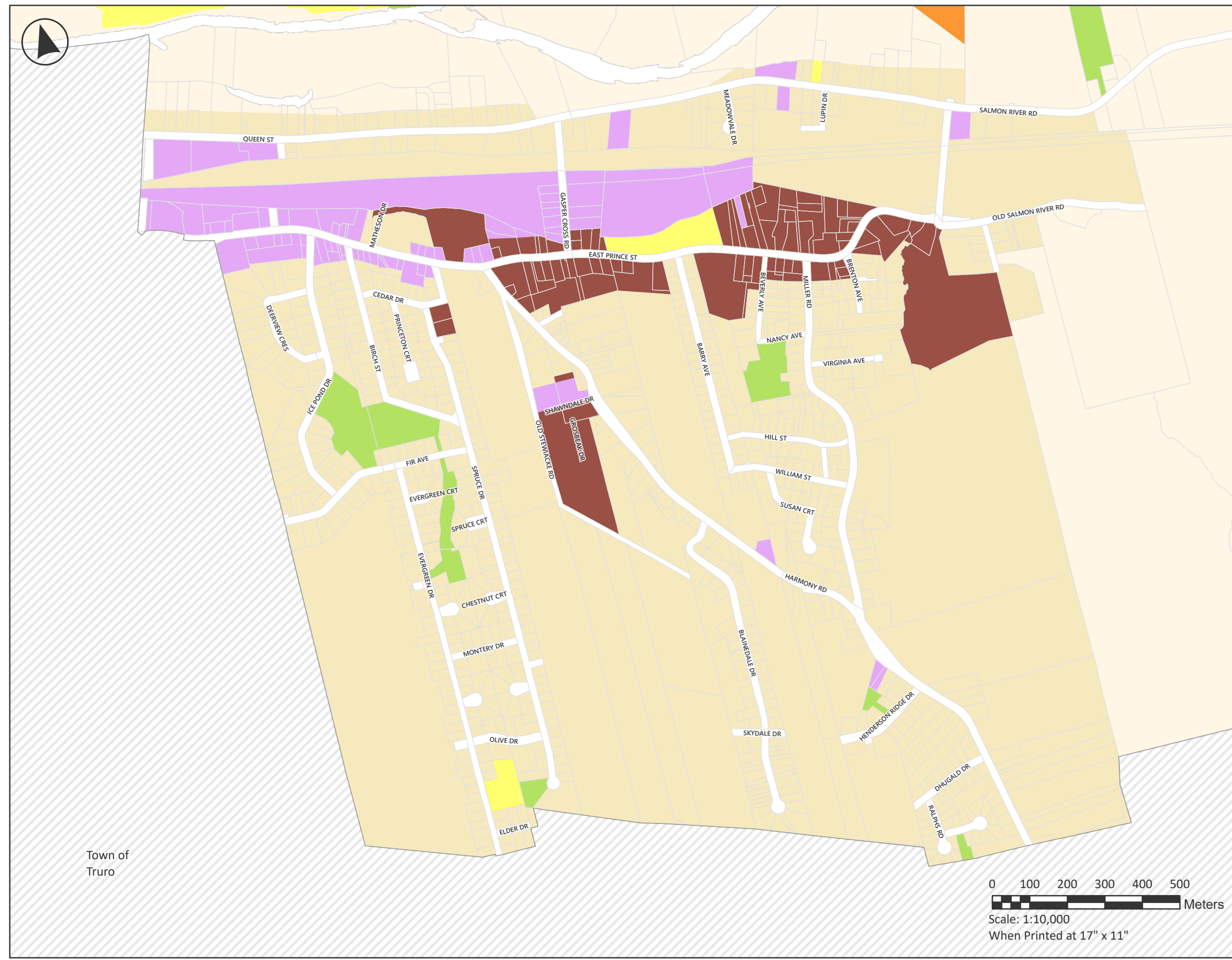


Notes
Property information provided by
Land Information Services of Service Nova Scotia
and Municipal Relations.
Maps originally generated with ArcGIS
June 5, 2025.
Current Version updated 2026.

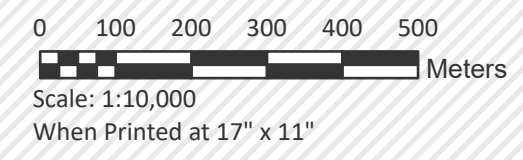


SALMON RIVER FUTURE LAND USE SCHEDULE B

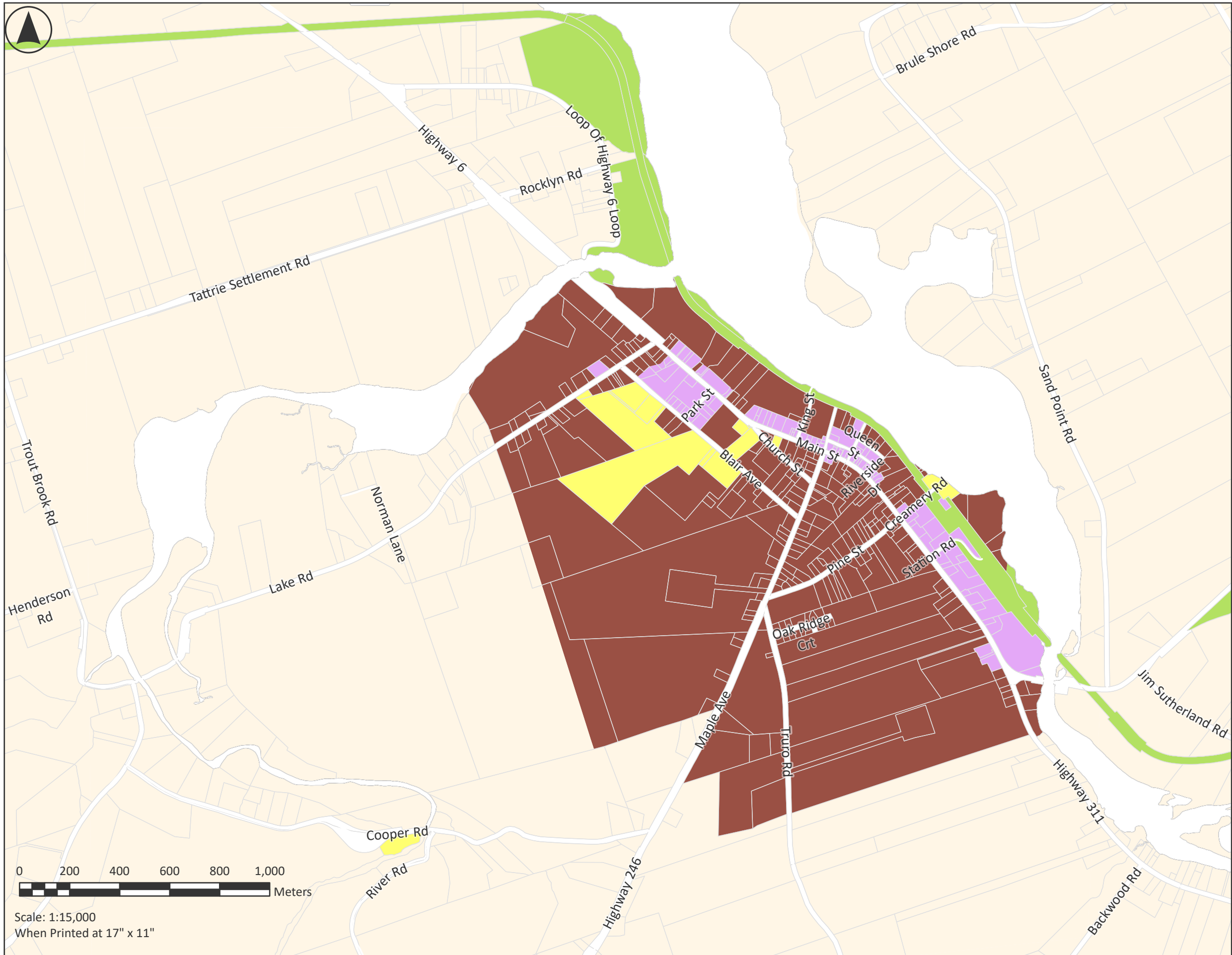
- I Institutional
- C Commercial
- CDD Comprehensive Development District
- M Industrial
- POS Parks and Open Spaces
- R Rural
- RLD Low Density Residential
- RMHD Medium-High Density Residential



Town of
Truro



Notes
 Property information provided by
 Land Information Services of Service Nova Scotia
 and Municipal Relations.
 Maps originally generated with ArcGIS
 June 5, 2025.
 Current Version updated 2026.



TATAMAGOUCHE FUTURE LAND USE SCHEDULE B

- I Institutional
- C Commercial
- CDD Comprehensive Development District
- M Industrial
- POS Parks and Open Spaces
- R Rural
- RLD Low Density Residential
- RMHD Medium-High Density Residential



Scale: 1:15,000
When Printed at 17" x 11"

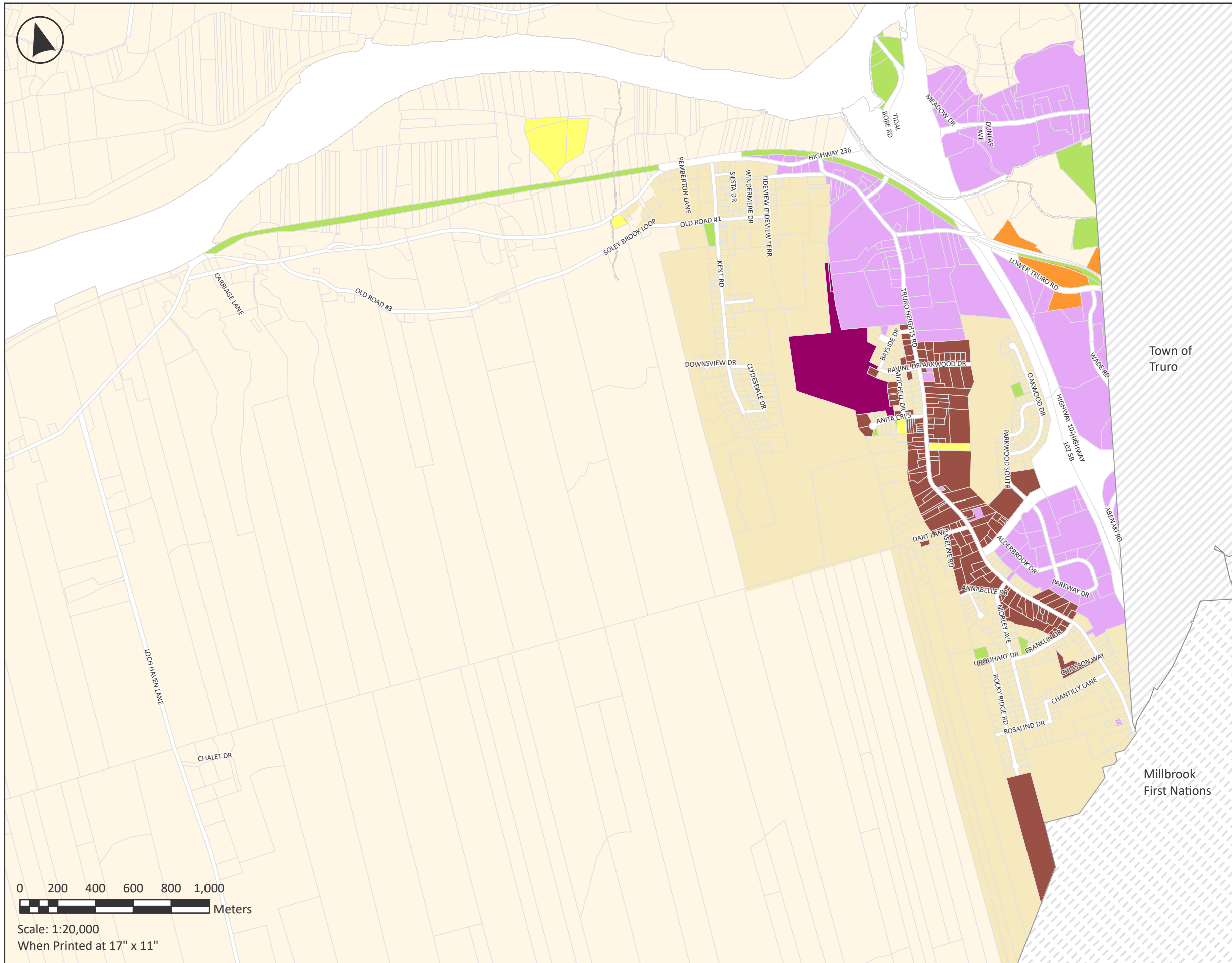


Notes
 Property information provided by
 Land Information Services of Service Nova Scotia
 and Municipal Relations.
 Maps originally generated with ArcGIS
 June 5, 2025.
 Current Version updated 2026.



TRURO HEIGHTS FUTURE LAND USE SCHEDULE B

- I Institutional
- C Commercial
- CDD Comprehensive Development District
- M Industrial
- POS Parks and Open Spaces
- R Rural
- RLD Low Density Residential
- RMHD Medium-High Density Residential



Scale: 1:20,000
When Printed at 17" x 11"



Notes
Property information provided by
Land Information Services of Service Nova Scotia
and Municipal Relations.

Maps originally generated with ArcGIS
June 5, 2025.

Current Version updated 2026.